

Anti-ABCC2 antibody (991-1040) (STJ94205)

GENERAL INFORMATION

Product Type	Primary antibodies
Applications	WB/ELISA
Host / Source	Rabbit
Reactivity	Human/Rat/Mouse

PRODUCT PROPERTIES

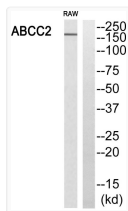
Clonality	Polyclonal
Concentration	1 mg/mL
Conjugation	Unconjugated
Purification	The antibody was affinity-purified from rabbit antiserum by affinity-chromatography using epitope-specific immunogen.
Dilution Range	WB 1:500-1:2000 ELISA 1:10000
Formulation	Liquid in PBS containing 50% Glycerol, 0.5% BSA and 0.02% Sodium Azide.
Isotype	IgG
Molecular Weight	Calculated: 175kD Observed: 190-250kD
Storage Instruction	Store at -20°C for up to 1 year from the date of receipt, and avoid repeat freeze-thaw cycles.

TARGET INFORMATION

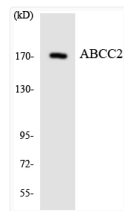
Gene ID	1244
Gene Symbol	ABCC2
UniProt ID	MRP2_HUMAN
Immunogen Region	991-1040
Specificity	MRP2 Polyclonal Antibody detects endogenous levels of MRP2 protein.

ADDITIONAL INFORMATION

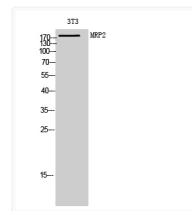
Note STRICTLY FOR FURTHER SCIENTIFIC RESEARCH USE ONLY (RUO). MUST NOT TO BE USED IN DIAGNOSTIC OR THERAPEUTIC APPLICATIONS.



Western blot analysis of ABCC2 Antibody. The lane on the right is blocked with the ABCC2 peptide.



Western blot analysis of the lysates from HeLa cells using ABCC2 antibody.



Western blot analysis of 3T3 cells using MRP2 Polyclonal Antibody diluted at 1: 1000