

Anti-MRGPRX1 antibody (271-320) (STJ94200)

GENERAL INFORMATION

Product Type	Primary antibodies
Applications	WB/IHC
Host / Source	Rabbit
Reactivity	Human/Rat/Mouse

PRODUCT PROPERTIES

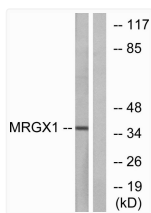
Clonality	Polyclonal
Concentration	1 mg/mL
Conjugation	Unconjugated
Purification	The antibody was affinity-purified from rabbit antiserum by affinity-chromatography using epitope-specific immunogen.
Dilution Range	WB 1:500-2000 IHC-p 1:50-300
Formulation	Liquid in PBS containing 50% Glycerol, 0.5% BSA and 0.02% Sodium Azide.
Isotype	IgG
Molecular Weight	Observed: 36kD
Storage Instruction	Store at -20°C for up to 1 year from the date of receipt, and avoid repeat freeze-thaw cycles.

TARGET INFORMATION

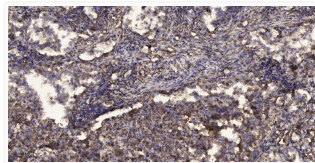
Gene ID	259249
Gene Symbol	MRGPRX1
UniProt ID	MRGX1_HUMAN
Immunogen Region	271-320
Specificity	MRGX1 Polyclonal Antibody detects endogenous levels of MRGX1 protein.

ADDITIONAL INFORMATION

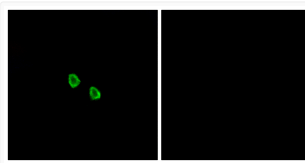
Note **STRICTLY FOR FURTHER SCIENTIFIC RESEARCH USE ONLY (RUO). MUST NOT TO BE USED IN DIAGNOSTIC OR THERAPEUTIC APPLICATIONS.**



Western blot analysis of lysates from MCF-7 cells, using MRGX1 Antibody. The lane on the right was blocked with the STJ94200



Immunohistochemical analysis of paraffin-embedded human squamous cell carcinoma of lung. 1, Antibody was diluted at STJ94200



Immunofluorescence analysis of HepG2 cells using MRGX1 Antibody. The picture on the right is blocked with the STJ94200