

Anti-KIF20B antibody (1771-1820) (STJ94188)

GENERAL INFORMATION

Product Type	Primary antibodies
Applications	IF/ELISA/IHC
Host / Source	Rabbit
Reactivity	Human/Rat/Mouse

PRODUCT PROPERTIES

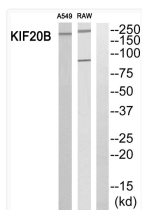
Clonality	Polyclonal
Concentration	1 mg/mL
Conjugation	Unconjugated
Purification	The antibody was affinity-purified from rabbit antiserum by affinity-chromatography using epitope-specific immunogen.
Dilution Range	IF ICC 1:50-300 ELISA 1:2000-20000 IHC-p 1:50-200
Formulation	Liquid in PBS containing 50% Glycerol, 0.5% BSA and 0.02% Sodium Azide.
Isotype	IgG
Molecular Weight	Observed: 210kD
Storage Instruction	Store at -20°C for up to 1 year from the date of receipt, and avoid repeat freeze-thaw cycles.

TARGET INFORMATION

Gene ID	9585
Gene Symbol	KIF20B
UniProt ID	K120B_HUMAN
Immunogen Region	1771-1820
Specificity	MPP1 Polyclonal Antibody detects endogenous levels of MPP1 protein.

ADDITIONAL INFORMATION

Note STRICTLY FOR FURTHER SCIENTIFIC RESEARCH USE ONLY (RUO). MUST NOT TO BE USED IN DIAGNOSTIC OR THERAPEUTIC APPLICATIONS.



Western blot analysis of KIF20B Antibody. The lane on the right is blocked with the KIF20B peptide.