

## Anti-MSN antibody (524-573) (STJ94178)

### GENERAL INFORMATION

Product Type	Primary antibodies
Applications	WB/IHC/IF/ELISA
Host / Source	Rabbit
Reactivity	Human/Mouse/Rat

### PRODUCT PROPERTIES

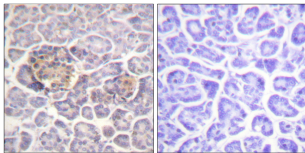
Clonality	Polyclonal
Concentration	1 mg/mL
Conjugation	Unconjugated
Purification	The antibody was affinity-purified from rabbit antiserum by affinity-chromatography using epitope-specific immunogen.
Dilution Range	WB 1:500-1:2000 IHC 1:100-1:300 ELISA 1:20000 IF 1:50-200
Formulation	Liquid in PBS containing 50% Glycerol, 0.5% BSA and 0.02% Sodium Azide.
Isotype	IgG
Molecular Weight	Observed: 67kD
Storage Instruction	Store at -20°C for up to 1 year from the date of receipt, and avoid repeat freeze-thaw cycles.

### TARGET INFORMATION

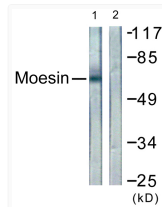
Gene ID	<a href="#">4478</a> <a href="#">7430</a> <a href="#">5962</a> <a href="#">MSN</a> <a href="#">EZR</a>
UniProt ID	<a href="#">MOES_HUMAN</a> <a href="#">EZRI_HUMAN</a> <a href="#">RADL_HUMAN</a>
Immunogen Region	524-573
Specificity	Moesin/Ezrin/Radixin Polyclonal Antibody detects endogenous levels of Moesin/Ezrin/Radixin protein.

### ADDITIONAL INFORMATION

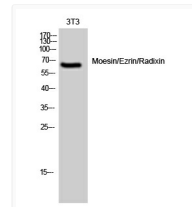
Note STRICTLY FOR FURTHER SCIENTIFIC RESEARCH USE ONLY (RUO). MUST NOT TO BE USED IN DIAGNOSTIC OR THERAPEUTIC APPLICATIONS.



Immunohistochemistry analysis of paraffin-embedded human pancreas tissue, using Moesin/Ezrin/Radixin Antibody. The picture on the right is blocked with the synthesized peptide.



Western blot analysis of lysates from NIH/3T3 cells, using Moesin/Ezrin/Radixin Antibody. The lane on the right is blocked with the synthesized peptide.



Western blot analysis of 3T3 cells using Moesin/Ezrin/Radixin Polyclonal Antibody diluted at 1: 2000