

Anti-MID1 antibody (71-120 aa) (STJ94125)

GENERAL INFORMATION

Product Type	Primary antibodies
Applications	WB/IHC/IF/ELISA
Host / Source	Rabbit
Reactivity	Human/Mouse/Rat

PRODUCT PROPERTIES

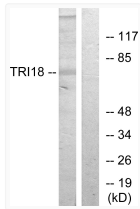
Clonality	Polyclonal
Concentration	1 mg/mL
Conjugation	Unconjugated
Purification	The antibody was affinity-purified from rabbit antiserum by affinity-chromatography using epitope-specific immunogen.
Dilution Range	WB 1:500-1:2000 IHC 1:100-1:300 IF 1:200-1:1000 ELISA 1:40000
Formulation	Liquid in PBS containing 50% Glycerol, 0.5% BSA and 0.02% Sodium Azide.
Isotype	IgG
Molecular Weight	Observed: 75kD
Storage Instruction	Store at -20°C for up to 1 year from the date of receipt, and avoid repeat freeze-thaw cycles.

TARGET INFORMATION

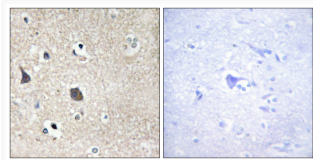
Gene ID	4281
Gene Symbol	MID1
UniProt ID	TRI18_HUMAN
Immunogen Region	71-120 aa
Specificity	Midline-1 Polyclonal Antibody detects endogenous levels of Midline-1 protein.

ADDITIONAL INFORMATION

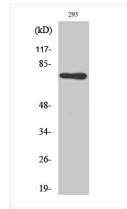
Note **STRICTLY FOR FURTHER SCIENTIFIC RESEARCH USE ONLY (RUO). MUST NOT TO BE USED IN DIAGNOSTIC OR THERAPEUTIC APPLICATIONS.**



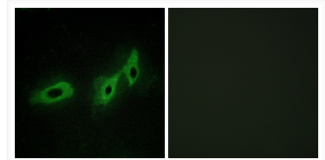
Western blot analysis of lysates from 293 cells, using TRI18 Antibody. The lane on the right is blocked with the synthesized peptide.



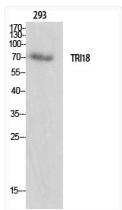
Immunohistochemistry analysis of paraffin-embedded human brain tissue, using TRI18 Antibody. The picture on the right is blocked with the synthesized peptide.



Western blot analysis of 293 cells using Midline-1 Polyclonal Antibody



Immunofluorescence analysis of HeLa cells, using TRI18 Antibody. The picture on the right is blocked with the synthesized peptide.



Western blot analysis of various cells using Midline-1 Polyclonal Antibody