

Anti-GRM5 antibody (21-70 aa) (STJ94110)

GENERAL INFORMATION

Product Type	Primary antibodies
Applications	WB/IHC/IF/ELISA
Host / Source	Rabbit
Reactivity	Human/Mouse/Rat

PRODUCT PROPERTIES

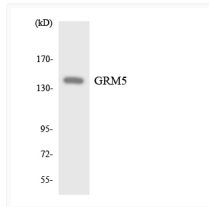
Clonality	Polyclonal
Concentration	1 mg/mL
Conjugation	Unconjugated
Purification	The antibody was affinity-purified from rabbit antiserum by affinity-chromatography using epitope-specific immunogen.
Dilution Range	WB 1:500-1:2000 IHC 1:100-1:300 IF 1:200-1:1000 ELISA 1:10000
Formulation	Liquid in PBS containing 50% Glycerol, 0.5% BSA and 0.02% Sodium Azide.
Isotype	IgG
Molecular Weight	Observed: 130kD
Storage Instruction	Store at -20°C for up to 1 year from the date of receipt, and avoid repeat freeze-thaw cycles.

TARGET INFORMATION

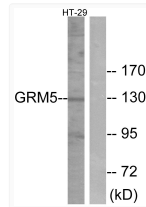
Gene ID	2915
Gene Symbol	GRM5
UniProt ID	GRM5_HUMAN
Immunogen Region	21-70 aa
Specificity	mGluR5 Polyclonal Antibody detects endogenous levels of mGluR5 protein.

ADDITIONAL INFORMATION

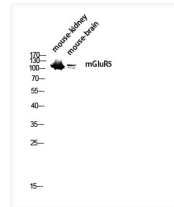
Note STRICTLY FOR FURTHER SCIENTIFIC RESEARCH USE ONLY (RUO). MUST NOT TO BE USED IN DIAGNOSTIC OR THERAPEUTIC APPLICATIONS.



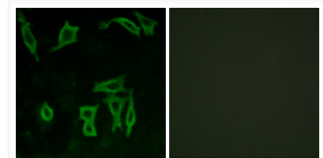
Western blot analysis of the lysates from HeLa cells using GRM5 antibody.



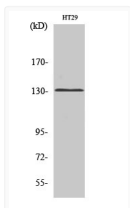
Western blot analysis of lysates from HT-29 cells, using GRM5 Antibody. The lane on the right is blocked with the synthesized peptide.



Western blot analysis of mouse-kidney mouse-brain lysis using mGluR5 antibody. Antibody was diluted at 1:1000



Immunofluorescence analysis of LOVO cells, using GRM5 Antibody. The picture on the right is blocked with the synthesized peptide.



Western blot analysis of various cells using mGluR5 Polyclonal Antibody diluted at 1: 1000