

## Anti-OPN4 antibody (429-478 aa) (STJ94094)

### GENERAL INFORMATION

Product Type	Primary antibodies
Applications	WB/ELISA/IHC
Host / Source	Rabbit
Reactivity	Human/Rat/Mouse

### PRODUCT PROPERTIES

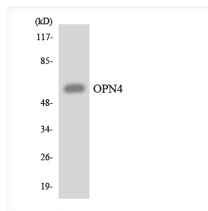
Clonality	Polyclonal
Concentration	1 mg/mL
Conjugation	Unconjugated
Purification	The antibody was affinity-purified from rabbit antiserum by affinity-chromatography using epitope-specific immunogen.
Dilution Range	WB 1:500-2000 IHC-P 1:50-300 ELISA 2000-20000
Formulation	Liquid in PBS containing 50% Glycerol, 0.5% BSA and 0.02% Sodium Azide.
Isotype	IgG
Molecular Weight	Observed: 55kD
Storage Instruction	Store at -20°C for up to 1 year from the date of receipt, and avoid repeat freeze-thaw cycles.

### TARGET INFORMATION

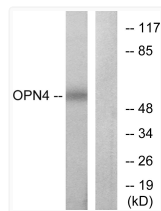
Gene ID	<a href="#">94233</a>
Gene Symbol	<a href="#">OPN4</a>
UniProt ID	<a href="#">OPN4_HUMAN</a>
Immunogen Region	429-478 aa
Specificity	Melanopsin Polyclonal Antibody detects endogenous levels of Melanopsin protein.

### ADDITIONAL INFORMATION

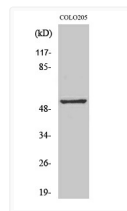
Note **STRICTLY FOR FURTHER SCIENTIFIC RESEARCH USE ONLY (RUO). MUST NOT TO BE USED IN DIAGNOSTIC OR THERAPEUTIC APPLICATIONS.**



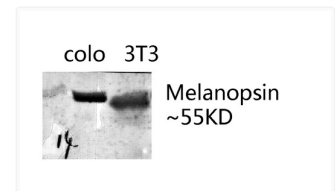
Western blot analysis of the lysates from HeLa cells using OPN4 antibody.



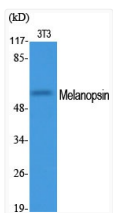
Western blot analysis of lysates from COLO cells, using OPN4 Antibody. The lane on the right is blocked with the synthesized peptide.



Western blot analysis of COLO205 cells using Melanopsin Polyclonal Antibody



Western blot analysis of various lysis using Melanopsin Polyclonal Antibody. Secondary antibody was diluted at 1:20000



Western blot analysis of various cells using Melanopsin Polyclonal Antibody