

Anti-MASP2 antibody (227-276 aa) (STJ94021)

GENERAL INFORMATION

Product Type	Primary antibodies
Applications	WB/ELISA
Host / Source	Rabbit
Reactivity	Human/Rat/Mouse

PRODUCT PROPERTIES

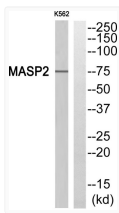
Clonality	Polyclonal
Concentration	1 mg/mL
Conjugation	Unconjugated
Purification	The antibody was affinity-purified from rabbit antiserum by affinity-chromatography using epitope-specific immunogen.
Dilution Range	WB 1:500-1:2000 ELISA 1:20000
Formulation	Liquid in PBS containing 50% Glycerol, 0.5% BSA and 0.02% Sodium Azide.
Isotype	IgG
Molecular Weight	Observed: 75kD
Storage Instruction	Store at -20°C for up to 1 year from the date of receipt, and avoid repeat freeze-thaw cycles.

TARGET INFORMATION

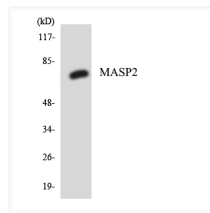
Gene ID	10747
Gene Symbol	MASP2
UniProt ID	MASP2_HUMAN
Immunogen Region	227-276 aa
Specificity	MASP-2 Polyclonal Antibody detects endogenous levels of MASP-2 protein.

ADDITIONAL INFORMATION

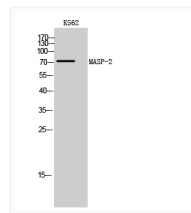
Note STRICTLY FOR FURTHER SCIENTIFIC RESEARCH USE ONLY (RUO). MUST NOT TO BE USED IN DIAGNOSTIC OR THERAPEUTIC APPLICATIONS.



Western blot analysis of MASP2 Antibody. The lane on the right is blocked with the MASP2 peptide.



Western blot analysis of the lysates from HT-29 cells using MASP2 antibody.



Western blot analysis of K562 cells using MASP-2 Polyclonal Antibody