

## Anti-MARK1/2/3/4 antibody (181-230 aa) (STJ94015)

### GENERAL INFORMATION

Product Type	Primary antibodies
Applications	WB/IHC/IF/ELISA
Host / Source	Rabbit
Reactivity	Human/Mouse/Rat/Monkey

### PRODUCT PROPERTIES

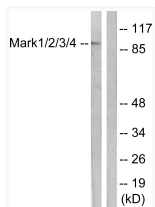
Clonality	Polyclonal
Concentration	1 mg/mL
Conjugation	Unconjugated
Purification	The antibody was affinity-purified from rabbit antiserum by affinity-chromatography using epitope-specific immunogen.
Dilution Range	WB 1:500-1:2000 IHC 1:100-1:300 IF 1:200-1:1000 ELISA 1:10000
Formulation	Liquid in PBS containing 50% Glycerol, 0.5% BSA and 0.02% Sodium Azide.
Isotype	IgG
Molecular Weight	Observed: 89kD
Storage Instruction	Store at -20°C for up to 1 year from the date of receipt, and avoid repeat freeze-thaw cycles.

### TARGET INFORMATION

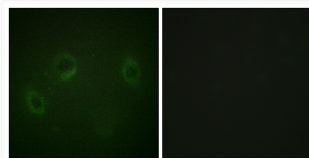
Gene ID	<a href="#">4139</a> <a href="#">2011</a> <a href="#">4140</a> <a href="#">MARK1</a> <a href="#">MARK2</a> <a href="#">MARK1_HUMAN</a> <a href="#">MARK2_HUMAN</a> <a href="#">MARK3_HUMAN</a>
Immunogen Region	181-230 aa
Specificity	MARK1/2/3/4 Polyclonal Antibody detects endogenous levels of MARK1/2/3/4 protein.

### ADDITIONAL INFORMATION

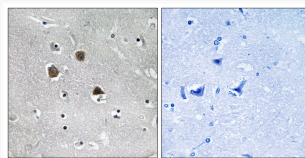
Note STRICTLY FOR FURTHER SCIENTIFIC RESEARCH USE ONLY (RUO). MUST NOT TO BE USED IN DIAGNOSTIC OR THERAPEUTIC APPLICATIONS.



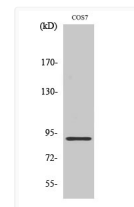
Western blot analysis of lysates from COS7 cells, using MARK1/2/3/4 Antibody. The lane on the right is blocked with the synthesized peptide.



Immunofluorescence analysis of HeLa cells, using MARK1/2/3/4 Antibody. The picture on the right is blocked with the synthesized peptide.



Immunohistochemistry analysis of paraffin-embedded human brain tissue, using MARK1/2/3/4 Antibody. The picture on the right is blocked with the synthesized peptide.



Western blot analysis of various cells using MARK1/2/3/4 Polyclonal Antibody