

Anti-MARCHF5 antibody (21-70 aa) (STJ94011)

GENERAL INFORMATION

Product Type	Primary antibodies
Applications	IF/WB/ELISA
Host / Source	Rabbit
Reactivity	Human/Mouse/Rat

PRODUCT PROPERTIES

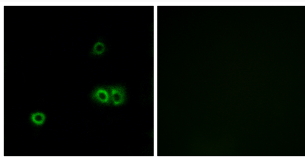
Clonality	Polyclonal
Concentration	1 mg/mL
Conjugation	Unconjugated
Purification	The antibody was affinity-purified from rabbit antiserum by affinity-chromatography using epitope-specific immunogen.
Dilution Range	WB 1:500-2000 IF 1:200-1:1000 ELISA 1:40000
Formulation	Liquid in PBS containing 50% Glycerol, 0.5% BSA and 0.02% Sodium Azide.
Isotype	IgG
Molecular Weight	Observed: 37kD
Storage Instruction	Store at -20°C for up to 1 year from the date of receipt, and avoid repeat freeze-thaw cycles.

TARGET INFORMATION

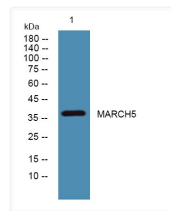
Gene ID	54708
Gene Symbol	MARCHF5
UniProt ID	MARH5_HUMAN
Immunogen Region	21-70 aa
Specificity	MARCH5 Polyclonal Antibody detects endogenous levels of 40607 protein.

ADDITIONAL INFORMATION

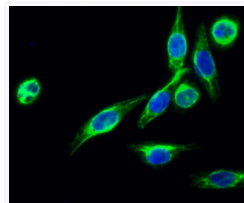
Note STRICTLY FOR FURTHER SCIENTIFIC RESEARCH USE ONLY (RUO). MUST NOT TO BE USED IN DIAGNOSTIC OR THERAPEUTIC APPLICATIONS.



Immunofluorescence analysis of A549 cells, using MARCH5 Antibody. The picture on the right is blocked with the synthesized peptide.



Western blot analysis of lysates from U2OS cells, primary antibody was diluted at 1:1000, 4°C overnight



Immunofluorescence analysis of HeLa cell. 1, MARCH5 Polyclonal Antibody (green) was diluted at 1:200 (4°C overnight). 2, Goat Anti Rabbit Alexa Fluor 488 Catalog: (NA) was diluted at 1:1000 (room temperature, 50min). 3 DAPI (blue) 10min.