

Anti-MAD2L1 antibody (91-140 aa) (STJ93983)

GENERAL INFORMATION

Product Type	Primary antibodies
Applications	WB/IP/ELISA
Host / Source	Rabbit
Reactivity	Human/Rat/Mouse

PRODUCT PROPERTIES

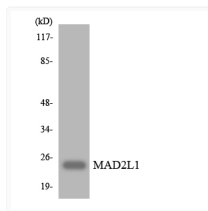
Clonality	Polyclonal
Concentration	1 mg/mL
Conjugation	Unconjugated
Purification	The antibody was affinity-purified from rabbit antiserum by affinity-chromatography using epitope-specific immunogen.
Dilution Range	WB 1:500-1:2000 IP 1:200-500 ELISA 1:5000
Formulation	Liquid in PBS containing 50% Glycerol, 0.5% BSA and 0.02% Sodium Azide.
Isotype	IgG
Molecular Weight	Observed: 25kD
Storage Instruction	Store at -20°C for up to 1 year from the date of receipt, and avoid repeat freeze-thaw cycles.

TARGET INFORMATION

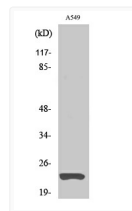
Gene ID	4085
Gene Symbol	MAD2L1
UniProt ID	MD2L1_HUMAN
Immunogen Region	91-140 aa
Specificity	MAD2 Polyclonal Antibody detects endogenous levels of MAD2 protein.

ADDITIONAL INFORMATION

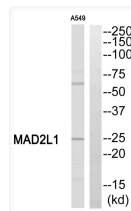
Note STRICTLY FOR FURTHER SCIENTIFIC RESEARCH USE ONLY (RUO). MUST NOT TO BE USED IN DIAGNOSTIC OR THERAPEUTIC APPLICATIONS.



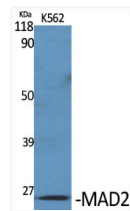
Western blot analysis of the lysates from HUVEC cells using MAD2L1 antibody.



Western blot analysis of A549 cells using MAD2 Polyclonal Antibody diluted at 1: 1000



Western blot analysis of MAD2L1 Antibody. The lane on the right is blocked with the MAD2L1 peptide.



Western blot analysis of various cells using MAD2 Polyclonal Antibody diluted at 1: 1000