

Anti-CACNG1 antibody (137-186 aa) (STJ93964)

GENERAL INFORMATION

Product Type	Primary antibodies
Applications	WB/ELISA
Host / Source	Rabbit
Reactivity	Human/Mouse/Rat

PRODUCT PROPERTIES

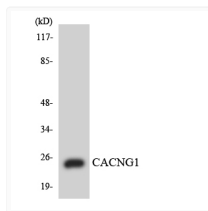
Clonality	Polyclonal
Concentration	1 mg/mL
Conjugation	Unconjugated
Purification	The antibody was affinity-purified from rabbit antiserum by affinity-chromatography using epitope-specific immunogen.
Dilution Range	WB 1:500-1:2000 ELISA 1:5000
Formulation	Liquid in PBS containing 50% Glycerol, 0.5% BSA and 0.02% Sodium Azide.
Isotype	IgG
Molecular Weight	Observed: 25kD
Storage Instruction	Store at -20°C for up to 1 year from the date of receipt, and avoid repeat freeze-thaw cycles.

TARGET INFORMATION

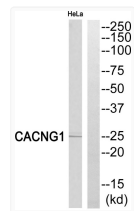
Gene ID	786
Gene Symbol	CACNG1
UniProt ID	CCG1_HUMAN
Immunogen Region	137-186 aa
Specificity	L-type Ca ⁺⁺ CP Gamma 1 Polyclonal Antibody detects endogenous levels of L-type Ca ⁺⁺ CP Gamma 1 protein.

ADDITIONAL INFORMATION

Note STRICTLY FOR FURTHER SCIENTIFIC RESEARCH USE ONLY (RUO). MUST NOT TO BE USED IN DIAGNOSTIC OR THERAPEUTIC APPLICATIONS.



Western blot analysis of the lysates from COLO205 cells using CACNG1 antibody.



Western blot analysis of CACNG1 Antibody. The lane on the right is blocked with the CACNG1 peptide.