

Anti-GPAT3 antibody (381-430 aa) (STJ93949)

GENERAL INFORMATION

Product Type	Primary antibodies
Applications	WB/IHC/IF/ELISA
Host / Source	Rabbit
Reactivity	Human/Mouse/Rat

PRODUCT PROPERTIES

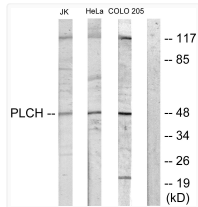
Clonality	Polyclonal
Concentration	1 mg/mL
Conjugation	Unconjugated
Purification	The antibody was affinity-purified from rabbit antiserum by affinity-chromatography using epitope-specific immunogen.
Dilution Range	WB 1:500-1:2000 IHC 1:100-1:300 IF 1:200-1:1000 ELISA 1:10000
Formulation	Liquid in PBS containing 50% Glycerol, 0.5% BSA and 0.02% Sodium Azide.
Isotype	IgG
Molecular Weight	Observed: 48kD
Storage Instruction	Store at -20°C for up to 1 year from the date of receipt, and avoid repeat freeze-thaw cycles.

TARGET INFORMATION

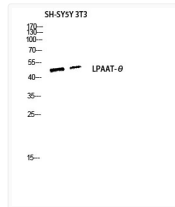
Gene ID	84803
Gene Symbol	GPAT3
UniProt ID	GPAT3_HUMAN
Immunogen Region	381-430 aa
Specificity	LPAAT-Theta Polyclonal Antibody detects endogenous levels of LPAAT-Theta protein.

ADDITIONAL INFORMATION

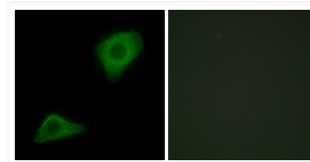
Note **STRICTLY FOR FURTHER SCIENTIFIC RESEARCH USE ONLY (RUO). MUST NOT TO BE USED IN DIAGNOSTIC OR THERAPEUTIC APPLICATIONS.**



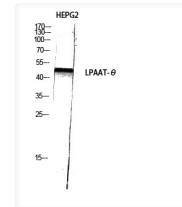
Western blot analysis of lysates from Jurkat cells, COLO205 cells, HeLa cells, and HUVEC cells, using PLCH Antibody. The lane on the right is blocked with the synthesized peptide.



Western blot analysis of SH-SY5Y 3T3 lysis using LPAAT-Theta antibody. Antibody was diluted at 1:1000



Immunofluorescence analysis of HepG2 cells, using PLCH Antibody. The picture on the right is blocked with the synthesized peptide.



Western blot analysis of HEPG2 using LPAAT-Theta Polyclonal Antibody diluted at 1: 1000