

Anti-AGPAT3 antibody (121-170 aa) (STJ93946)

GENERAL INFORMATION

Product Type	Primary antibodies
Applications	WB/ELISA/IHC
Host / Source	Rabbit
Reactivity	Human/Mouse/Rat

PRODUCT PROPERTIES

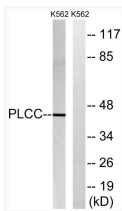
Clonality	Polyclonal
Concentration	1 mg/mL
Conjugation	Unconjugated
Purification	The antibody was affinity-purified from rabbit antiserum by affinity-chromatography using epitope-specific immunogen.
Dilution Range	WB 1:500-2000 IHC-P 1:50-300 ELISA 2000-20000
Formulation	Liquid in PBS containing 50% Glycerol, 0.5% BSA and 0.02% Sodium Azide.
Isotype	IgG
Molecular Weight	Observed: 40kD
Storage Instruction	Store at -20°C for up to 1 year from the date of receipt, and avoid repeat freeze-thaw cycles.

TARGET INFORMATION

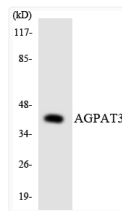
Gene ID	56894
Gene Symbol	AGPAT3
UniProt ID	PLCC_HUMAN
Immunogen Region	121-170 aa
Specificity	LPAAT-Gamma Polyclonal Antibody detects endogenous levels of LPAAT-Gamma protein.

ADDITIONAL INFORMATION

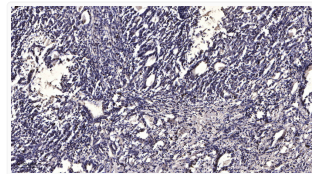
Note STRICTLY FOR FURTHER SCIENTIFIC RESEARCH USE ONLY (RUO). MUST NOT TO BE USED IN DIAGNOSTIC OR THERAPEUTIC APPLICATIONS.



Western blot analysis of lysates from K562 cells, using AGPAT3 Antibody. The lane on the right was blocked with the STJ93946



Western blot analysis of the lysates from COLO205 cells using AGPAT3 antibody. STJ93946



Immunohistochemical analysis of paraffin-embedded human gastric adenocarcinoma. 1, Antibody was diluted at 1:200 (4°C STJ93946