

Anti-TRARG1 antibody (1-50 aa) (STJ93945)

GENERAL INFORMATION

Product Type	Primary antibodies
Applications	WB/ELISA/IHC
Host / Source	Rabbit
Reactivity	Human/Rat/Mouse

PRODUCT PROPERTIES

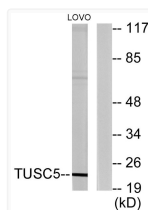
Clonality	Polyclonal
Concentration	1 mg/mL
Conjugation	Unconjugated
Purification	The antibody was affinity-purified from rabbit antiserum by affinity-chromatography using epitope-specific immunogen.
Dilution Range	WB 1:500-2000 IHC-P 1:50-300 ELISA 2000-20000
Formulation	Liquid in PBS containing 50% Glycerol, 0.5% BSA and 0.02% Sodium Azide.
Isotype	IgG
Molecular Weight	Observed: 22kD
Storage Instruction	Store at -20°C for up to 1 year from the date of receipt, and avoid repeat freeze-thaw cycles.

TARGET INFORMATION

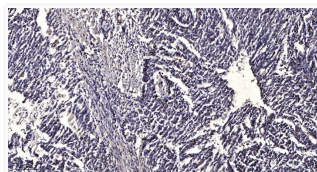
Gene ID	286753
Gene Symbol	TRARG1
UniProt ID	TARG1_HUMAN
Immunogen Region	1-50 aa
Specificity	LOST1 Polyclonal Antibody detects endogenous levels of LOST1 protein.

ADDITIONAL INFORMATION

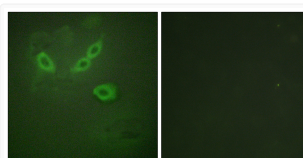
Note STRICTLY FOR FURTHER SCIENTIFIC RESEARCH USE ONLY (RUO). MUST NOT TO BE USED IN DIAGNOSTIC OR THERAPEUTIC APPLICATIONS.



Western blot analysis of lysates from LOVO cells, using TUSC5 Antibody. The lane on the right was blocked with the STJ93945



Immunohistochemical analysis of paraffin-embedded human gastric adenocarcinoma. 1. Antibody was diluted at 1:200 (4°C STJ93945



Immunofluorescence analysis of HeLa cells using TUSC5 Antibody. The image on the right is blocked with the synthesized STJ93945