

## Anti-PPFIBP1 antibody (300-349 aa) (STJ93933)

### GENERAL INFORMATION

Product Type	Primary antibodies
Applications	WB/IHC
Host / Source	Rabbit
Reactivity	Human/Mouse

### PRODUCT PROPERTIES

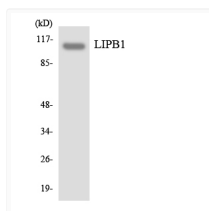
Clonality	Polyclonal
Concentration	1 mg/mL
Conjugation	Unconjugated
Purification	The antibody was affinity-purified from rabbit antiserum by affinity-chromatography using epitope-specific immunogen.
Dilution Range	WB 1:500-2000 IHC-P 1:50-300
Formulation	Liquid in PBS containing 50% Glycerol, 0.5% BSA and 0.02% Sodium Azide.
Isotype	IgG
Molecular Weight	Observed: 115kD
Storage Instruction	Store at -20°C for up to 1 year from the date of receipt, and avoid repeat freeze-thaw cycles.

### TARGET INFORMATION

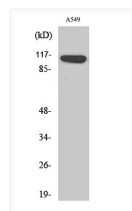
Gene ID	<a href="#">8496</a>
Gene Symbol	<a href="#">PPFIBP1</a>
UniProt ID	<a href="#">LIPB1_HUMAN</a>
Immunogen Region	300-349 aa
Specificity	Liprin Beta 1 Polyclonal Antibody detects endogenous levels of Liprin Beta 1 protein.

### ADDITIONAL INFORMATION

Note **STRICTLY FOR FURTHER SCIENTIFIC RESEARCH USE ONLY (RUO). MUST NOT TO BE USED IN DIAGNOSTIC OR THERAPEUTIC APPLICATIONS.**



Western blot analysis of the lysates from COLO205 cells using LIPB1 antibody.



Western blot analysis of various cells using Liprin Beta 1 Polyclonal Antibody diluted at 1 : 2000