

Anti-LHCGR antibody (621-670 aa) (STJ93923)

GENERAL INFORMATION

| | |
|---------------|--------------------|
| Product Type | Primary antibodies |
| Applications | WB/ELISA/IHC |
| Host / Source | Rabbit |
| Reactivity | Human/Mouse/Rat |

PRODUCT PROPERTIES

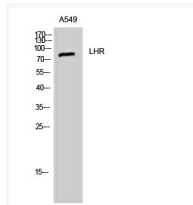
| | |
|---------------------|---|
| Clonality | Polyclonal |
| Concentration | 1 mg/mL |
| Conjugation | Unconjugated |
| Purification | The antibody was affinity-purified from rabbit antiserum by affinity-chromatography using epitope-specific immunogen. |
| Dilution Range | WB 1:500-2000 IHC-P 1:50-300 ELISA 2000-20000 |
| Formulation | Liquid in PBS containing 50% Glycerol, 0.5% BSA and 0.02% Sodium Azide. |
| Isotype | IgG |
| Molecular Weight | Observed: 80kD |
| Storage Instruction | Store at -20°C for up to 1 year from the date of receipt, and avoid repeat freeze-thaw cycles. |

TARGET INFORMATION

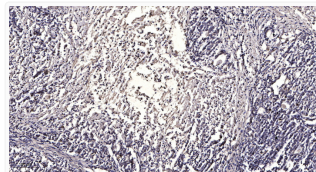
| | |
|------------------|---|
| Gene ID | 3973 |
| Gene Symbol | LHCGR |
| UniProt ID | LSHR_HUMAN |
| Immunogen Region | 621-670 aa |
| Specificity | LHR Polyclonal Antibody detects endogenous levels of LHR protein. |

ADDITIONAL INFORMATION

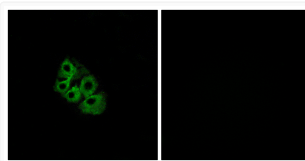
Note STRICTLY FOR FURTHER SCIENTIFIC RESEARCH USE ONLY (RUO). MUST NOT TO BE USED IN DIAGNOSTIC OR THERAPEUTIC APPLICATIONS.



Western blot analysis of A549 cells using LHR polyclonal antibody STJ93923



Immunohistochemical analysis of paraffin-embedded human gastric adenocarcinoma. 1. Antibody was diluted at 1:200 (4°C STJ93923)



Immunofluorescence analysis of A549 cells using LSHR Antibody. The picture on the right is blocked with the synthesized STJ93923