

## Anti-LATS1/2 antibody (1041-1090 aa) (STJ93908)

### GENERAL INFORMATION

Product Type	Primary antibodies
Applications	WB/IHC/IF/ELISA
Host / Source	Rabbit
Reactivity	Human/Mouse

### PRODUCT PROPERTIES

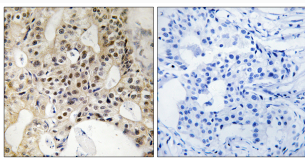
Clonality	Polyclonal
Concentration	1 mg/mL
Conjugation	Unconjugated
Purification	The antibody was affinity-purified from rabbit antiserum by affinity-chromatography using epitope-specific immunogen.
Dilution Range	WB 1:500-1:2000 IHC-P 1:100-300 ELISA 1:20000 IF 1:100-300
Formulation	Liquid in PBS containing 50% Glycerol, 0.5% BSA and 0.02% Sodium Azide.
Isotype	IgG
Molecular Weight	Observed: 130-140kD
Storage Instruction	Store at -20°C for up to 1 year from the date of receipt, and avoid repeat freeze-thaw cycles.

### TARGET INFORMATION

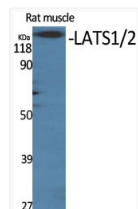
Gene ID	<a href="#">26524</a> <a href="#">9113</a>
Gene Symbol	<a href="#">LATS2</a> <a href="#">LATS1</a>
UniProt ID	<a href="#">LATS2_HUMAN</a> <a href="#">LATS1_HUMAN</a>
Immunogen Region	1041-1090 aa
Specificity	LATS1/2 Polyclonal Antibody detects endogenous levels of LATS1/2 protein.

### ADDITIONAL INFORMATION

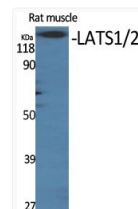
Note STRICTLY FOR FURTHER SCIENTIFIC RESEARCH USE ONLY (RUO). MUST NOT TO BE USED IN DIAGNOSTIC OR THERAPEUTIC APPLICATIONS.



Immunohistochemistry analysis of paraffin-embedded human breast carcinoma tissue, using LATS1/2 Antibody. The picture on the right is blocked with the synthesized peptide.



Western blot analysis of LATS1/2 Antibody



Western blot analysis of mouse-muscle cells using LATS1/2 Polyclonal Antibody diluted at 1 : 500