

Anti-TOR1AIP1 antibody (431-480 aa) (STJ93899)

GENERAL INFORMATION

Product Type	Primary antibodies
Applications	WB/ELISA/IHC
Host / Source	Rabbit
Reactivity	Human/Rat/Mouse

PRODUCT PROPERTIES

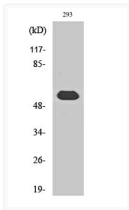
Clonality	Polyclonal
Concentration	1 mg/mL
Conjugation	Unconjugated
Purification	The antibody was affinity-purified from rabbit antiserum by affinity-chromatography using epitope-specific immunogen.
Dilution Range	WB 1:500-2000 IHC-P 1:50-300 ELISA 2000-20000
Formulation	Liquid in PBS containing 50% Glycerol, 0.5% BSA and 0.02% Sodium Azide.
Isotype	IgG
Molecular Weight	Observed: 66kD
Storage Instruction	Store at -20°C for up to 1 year from the date of receipt, and avoid repeat freeze-thaw cycles.

TARGET INFORMATION

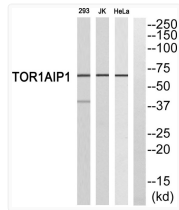
Gene ID	26092
Gene Symbol	TOR1AIP1
UniProt ID	TOIP1_HUMAN
Immunogen Region	431-480 aa
Specificity	LAP1B Polyclonal Antibody detects endogenous levels of LAP1B protein.

ADDITIONAL INFORMATION

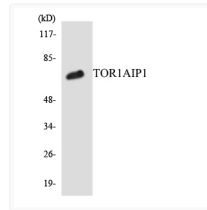
Note STRICTLY FOR FURTHER SCIENTIFIC RESEARCH USE ONLY (RUO). MUST NOT TO BE USED IN DIAGNOSTIC OR THERAPEUTIC APPLICATIONS.



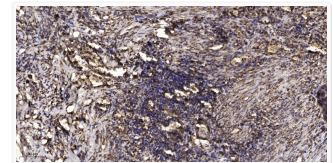
Western blot analysis of various cells using LAP1B polyclonal antibody on cells with nuclei extracted by Minute™ STJ93899



Western blot analysis of TOR1AIP1 antibody. The lane on the right is blocked with the TOR1AIP1 peptide. STJ93899



Western blot analysis of the lysates from COLO205 cells using TOR1AIP1 antibody. STJ93899



Immunohistochemical analysis of paraffin-embedded human squamous cell carcinoma of lung. 1. Antibody was diluted at STJ93899