

Anti-LAMA5 antibody (2381-2430 aa) (STJ93892)

GENERAL INFORMATION

Product Type	Primary antibodies
Applications	WB/IHC/IF/ELISA
Host / Source	Rabbit
Reactivity	Human/Mouse

PRODUCT PROPERTIES

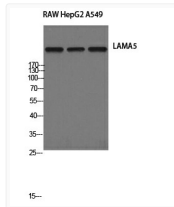
Clonality	Polyclonal
Concentration	1 mg/mL
Conjugation	Unconjugated
Purification	The antibody was affinity-purified from rabbit antiserum by affinity-chromatography using epitope-specific immunogen.
Dilution Range	WB 1:500-1:2000 IHC-P 1:100-300 ELISA 1:20000 IF 1:100-300
Formulation	Liquid in PBS containing 50% Glycerol, 0.5% BSA and 0.02% Sodium Azide.
Isotype	IgG
Molecular Weight	Observed: 400kD
Storage Instruction	Store at -20°C for up to 1 year from the date of receipt, and avoid repeat freeze-thaw cycles.

TARGET INFORMATION

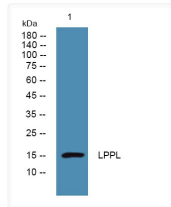
Gene ID	3911
Gene Symbol	LAMA5
UniProt ID	LAMA5_HUMAN
Immunogen Region	2381-2430 aa
Specificity	Laminin Alpha-5 Polyclonal Antibody detects endogenous levels of Laminin Alpha-5 protein.

ADDITIONAL INFORMATION

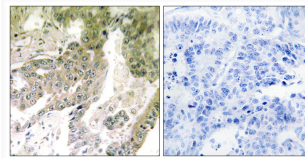
Note STRICTLY FOR FURTHER SCIENTIFIC RESEARCH USE ONLY (RUO). MUST NOT TO BE USED IN DIAGNOSTIC OR THERAPEUTIC APPLICATIONS.



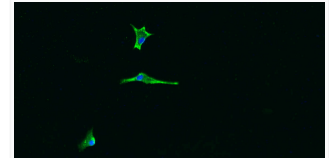
Western Blot analysis of RAW, HepG2, and A549 cells using Laminin α -5 Polyclonal Antibody STJ93892



Western blot analysis of lysates from DU145 cells, primary antibody was diluted at 1:1000, 4°C overnight STJ93892



Immunohistochemistry analysis of paraffin-embedded human lung carcinoma tissue, using LAMA5 Antibody. The picture on STJ93892



Immunofluorescence analysis of A549. 1, Primary antibody was diluted at 1:200 (4°C overnight). 2, Goat Anti Rabbit IgG STJ93892