

Anti-LAMA1 antibody (2501-2550 aa) (STJ93888)

GENERAL INFORMATION

Product Type	Primary antibodies
Applications	WB/ELISA/IHC
Host / Source	Rabbit
Reactivity	Human/Rat/Mouse

PRODUCT PROPERTIES

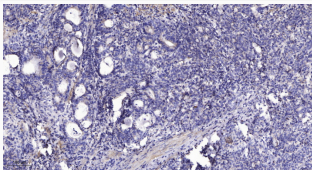
Clonality	Polyclonal
Concentration	1 mg/mL
Conjugation	Unconjugated
Purification	The antibody was affinity-purified from rabbit antiserum by affinity-chromatography using epitope-specific immunogen.
Dilution Range	WB 1:500-2000 IHC-P 1:50-300 ELISA 2000-20000
Formulation	Liquid in PBS containing 50% Glycerol, 0.5% BSA and 0.02% Sodium Azide.
Isotype	IgG
Molecular Weight	Calculated: 337kD
Storage Instruction	Store at -20°C for up to 1 year from the date of receipt, and avoid repeat freeze-thaw cycles.

TARGET INFORMATION

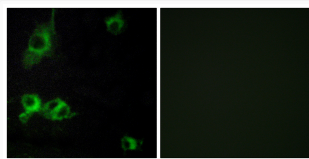
Gene ID	284217
Gene Symbol	LAMA1
UniProt ID	LAMA1_HUMAN
Immunogen Region	2501-2550 aa
Specificity	Laminin Alpha-1 Polyclonal Antibody detects endogenous levels of Laminin Alpha-1 protein.

ADDITIONAL INFORMATION

Note STRICTLY FOR FURTHER SCIENTIFIC RESEARCH USE ONLY (RUO). MUST NOT TO BE USED IN DIAGNOSTIC OR THERAPEUTIC APPLICATIONS.



Immunohistochemical analysis of paraffin-embedded human gastric adenocarcinoma. 1. Antibody was diluted at 1:200 (4°C STJ93888)



Immunofluorescence analysis of COS7 cells using LAMA1 Antibody. The picture on the right is blocked with the STJ93888