

Anti-KCND1 antibody (558-607 aa) (STJ93878)

GENERAL INFORMATION

Product Type	Primary antibodies
Applications	WB/IHC/IF/ELISA
Host / Source	Rabbit
Reactivity	Human/Mouse

PRODUCT PROPERTIES

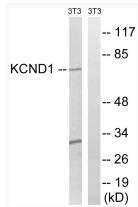
Clonality	Polyclonal
Concentration	1 mg/mL
Conjugation	Unconjugated
Purification	The antibody was affinity-purified from rabbit antiserum by affinity-chromatography using epitope-specific immunogen.
Dilution Range	WB 1:500-1:2000 IHC 1:100-1:300 ELISA 1:20000 IF 1:50-200
Formulation	Liquid in PBS containing 50% Glycerol, 0.5% BSA and 0.02% Sodium Azide.
Isotype	IgG
Molecular Weight	Observed: 70kD
Storage Instruction	Store at -20°C for up to 1 year from the date of receipt, and avoid repeat freeze-thaw cycles.

TARGET INFORMATION

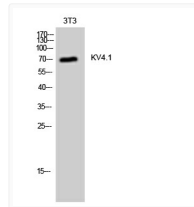
Gene ID	3750
Gene Symbol	KCND1
UniProt ID	KCND1_HUMAN
Immunogen Region	558-607 aa
Specificity	KV4.1 Polyclonal Antibody detects endogenous levels of KV4.1 protein.

ADDITIONAL INFORMATION

Note: STRICTLY FOR FURTHER SCIENTIFIC RESEARCH USE ONLY (RUO). MUST NOT TO BE USED IN DIAGNOSTIC OR THERAPEUTIC APPLICATIONS.



Western blot analysis of lysates from NIH/3T3 cells, using KCND1 Antibody. The lane on the right is blocked with the synthesized peptide.



Western blot analysis of 3T3 cells using KV4.1 Polyclonal Antibody