

Anti-KCNC4 antibody (1-50 aa) (STJ93877)

GENERAL INFORMATION

Product Type	Primary antibodies
Applications	WB/IHC/IF/ELISA
Host / Source	Rabbit
Reactivity	Human/Mouse/Monkey

PRODUCT PROPERTIES

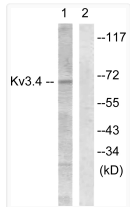
Clonality	Polyclonal
Concentration	1 mg/mL
Conjugation	Unconjugated
Purification	The antibody was affinity-purified from rabbit antiserum by affinity-chromatography using epitope-specific immunogen.
Dilution Range	WB 1:500-1:2000 IHC 1:100-1:300 IF 1:200-1:1000 ELISA 1:20000
Formulation	Liquid in PBS containing 50% Glycerol, 0.5% BSA and 0.02% Sodium Azide.
Isotype	IgG
Molecular Weight	Observed: 70kD
Storage Instruction	Store at -20°C for up to 1 year from the date of receipt, and avoid repeat freeze-thaw cycles.

TARGET INFORMATION

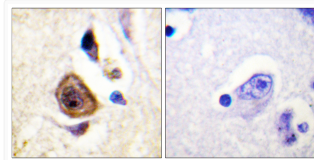
Gene ID	3749
Gene Symbol	KCNC4
UniProt ID	KCNC4_HUMAN
Immunogen Region	1-50 aa
Specificity	Kv3.4 Polyclonal Antibody detects endogenous levels of Kv3.4 protein.

ADDITIONAL INFORMATION

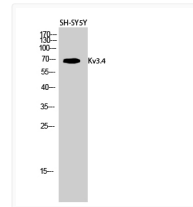
Note STRICTLY FOR FURTHER SCIENTIFIC RESEARCH USE ONLY (RUO). MUST NOT TO BE USED IN DIAGNOSTIC OR THERAPEUTIC APPLICATIONS.



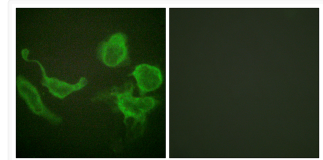
Western blot analysis of lysates from COS7 cells treated with Anisomycin 25ug/ml 30', using Kv3.4/KCNC4 Antibody. The lane on the right is blocked with the synthesized peptide.



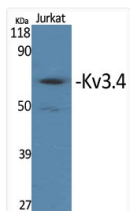
Immunohistochemistry analysis of paraffin-embedded human brain, using Kv3.4/KCNC4 Antibody. The picture on the right is blocked with the synthesized peptide.



Western blot analysis of SH-SY5Y cells using Kv3.4 Polyclonal Antibody diluted at 1: 500



Immunofluorescence analysis of HeLa cells, using Kv3.4/KCNC4 Antibody. The picture on the right is blocked with the synthesized peptide.



Western blot analysis of various cells using Kv3.4 Polyclonal Antibody diluted at 1: 500