

## Anti-KCNJ11 antibody (190-239 aa) (STJ93844)

### GENERAL INFORMATION

Product Type	Primary antibodies
Applications	WB/IHC/IF/ELISA
Host / Source	Rabbit
Reactivity	Human/Mouse/Rat

### PRODUCT PROPERTIES

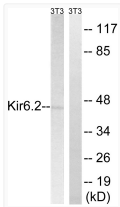
Clonality	Polyclonal
Concentration	1 mg/mL
Conjugation	Unconjugated
Purification	The antibody was affinity-purified from rabbit antiserum by affinity-chromatography using epitope-specific immunogen.
Dilution Range	WB 1:500-1:2000 IHC 1:100-1:300 IF 1:200-1:1000 ELISA 1:10000
Formulation	Liquid in PBS containing 50% Glycerol, 0.5% BSA and 0.02% Sodium Azide.
Isotype	IgG
Molecular Weight	Observed: 40kD
Storage Instruction	Store at -20°C for up to 1 year from the date of receipt, and avoid repeat freeze-thaw cycles.

### TARGET INFORMATION

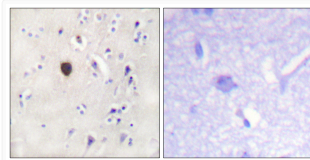
Gene ID	<a href="#">3767</a>
Gene Symbol	<a href="#">KCNJ11</a>
UniProt ID	<a href="#">KCJ11_HUMAN</a>
Immunogen Region	190-239 aa
Specificity	KIR6.2 Polyclonal Antibody detects endogenous levels of KIR6.2 protein.

### ADDITIONAL INFORMATION

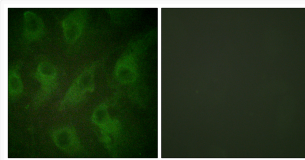
Note **STRICTLY FOR FURTHER SCIENTIFIC RESEARCH USE ONLY (RUO). MUST NOT TO BE USED IN DIAGNOSTIC OR THERAPEUTIC APPLICATIONS.**



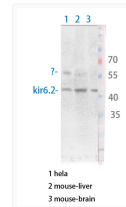
Western blot analysis of lysates from 3T3 cells, using Kir6.2 Antibody. The lane on the right is blocked with the synthesized peptide.



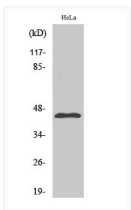
Immunohistochemistry analysis of paraffin-embedded human brain tissue, using Kir6.2 Antibody. The picture on the right is blocked with the synthesized peptide.



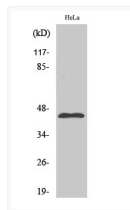
Immunofluorescence analysis of HeLa cells, using Kir6.2 Antibody. The picture on the right is blocked with the synthesized peptide.



Western blot analysis of various cells using Kir6.2 Antibody diluted at 1:1000. Secondary antibody was diluted at 1:20000



Western blot analysis of NIH-3T3 cells using KIR6.2 Polyclonal Antibody diluted at 1: 500



Western blot analysis of various cells using KIR6.2 Polyclonal Antibody diluted at 1: 500