

Anti-KIF4A antibody (1171-1220 aa) (STJ93837)

GENERAL INFORMATION

Product Type	Primary antibodies
Applications	WB/ELISA/IHC
Host / Source	Rabbit
Reactivity	Human/Rat/Mouse

PRODUCT PROPERTIES

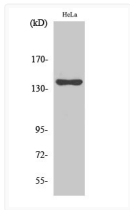
Clonality	Polyclonal
Concentration	1 mg/mL
Conjugation	Unconjugated
Purification	The antibody was affinity-purified from rabbit antiserum by affinity-chromatography using epitope-specific immunogen.
Dilution Range	WB 1:500-2000 IHC-P 1:50-300 ELISA 2000-20000
Formulation	Liquid in PBS containing 50% Glycerol, 0.5% BSA and 0.02% Sodium Azide.
Isotype	IgG
Molecular Weight	Observed: 140kD
Storage Instruction	Store at -20°C for up to 1 year from the date of receipt, and avoid repeat freeze-thaw cycles.

TARGET INFORMATION

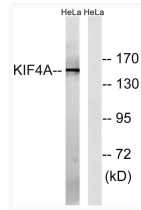
Gene ID	24137
Gene Symbol	KIF4A
UniProt ID	KIF4A_HUMAN
Immunogen Region	1171-1220 aa
Specificity	KIF4A Polyclonal Antibody detects endogenous levels of KIF4A protein.

ADDITIONAL INFORMATION

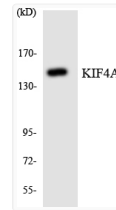
Note **STRICTLY FOR FURTHER SCIENTIFIC RESEARCH USE ONLY (RUO). MUST NOT TO BE USED IN DIAGNOSTIC OR THERAPEUTIC APPLICATIONS.**



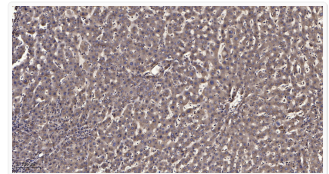
Western blot analysis of various cells using KIF4A Polyclonal Antibody diluted at 1:500 STJ93837



Western blot analysis of lysates from HeLa cells, using KIF4A Antibody. The lane on the right was blocked with the STJ93837



Western blot analysis of the lysates from HeLa cells using KIF4A antibody. STJ93837



Immunohistochemical analysis of paraffin-embedded human liver cancer. 1. Antibody was diluted at 1:200 (4°C overnight). STJ93837