

Anti-Keratin 37/38 antibody (201-250 aa) (STJ93830)

GENERAL INFORMATION

Product Type	Primary antibodies
Applications	WB/ELISA/IHC
Host / Source	Rabbit
Reactivity	Human/Rat/Mouse

PRODUCT PROPERTIES

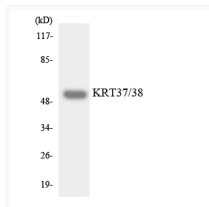
Clonality	Polyclonal
Concentration	1 mg/mL
Conjugation	Unconjugated
Purification	The antibody was affinity-purified from rabbit antiserum by affinity-chromatography using epitope-specific immunogen.
Dilution Range	WB 1:500-2000 IHC-P 1:50-300 ELISA 2000-20000
Formulation	Liquid in PBS containing 50% Glycerol, 0.5% BSA and 0.02% Sodium Azide.
Isotype	IgG
Molecular Weight	Observed: 50kD
Storage Instruction	Store at -20°C for up to 1 year from the date of receipt, and avoid repeat freeze-thaw cycles.

TARGET INFORMATION

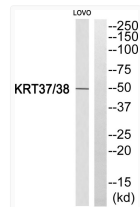
Gene ID	8687 8688
Gene Symbol	KRT38 KRT37
UniProt ID	KRT38_HUMAN KRT37_HUMAN
Immunogen Region	201-250 aa
Specificity	Keratin 37/38 Polyclonal Antibody detects endogenous levels of Keratin 37/38 protein.

ADDITIONAL INFORMATION

Note STRICTLY FOR FURTHER SCIENTIFIC RESEARCH USE ONLY (RUO). MUST NOT TO BE USED IN DIAGNOSTIC OR THERAPEUTIC APPLICATIONS.



Western blot analysis of the lysates from HepG2 cells using KRT37/38 antibody.



Western blot analysis of KRT37/38 Antibody. The lane on the right is blocked with the KRT37/38 peptide.