

Anti-KCNH1 antibody (720-769 aa) (STJ93821)

GENERAL INFORMATION

Product Type	Primary antibodies
Applications	WB/ELISA/IHC
Host / Source	Rabbit
Reactivity	Human/Mouse/Rat

PRODUCT PROPERTIES

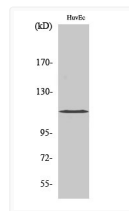
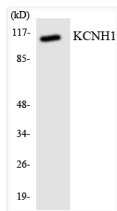
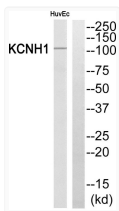
Clonality	Polyclonal
Concentration	1 mg/mL
Conjugation	Unconjugated
Purification	The antibody was affinity-purified from rabbit antiserum by affinity-chromatography using epitope-specific immunogen.
Dilution Range	WB 1:500-2000 IHC-P 1:50-300 ELISA 2000-20000
Formulation	Liquid in PBS containing 50% Glycerol, 0.5% BSA and 0.02% Sodium Azide.
Isotype	IgG
Molecular Weight	Observed: 110kD
Storage Instruction	Store at -20°C for up to 1 year from the date of receipt, and avoid repeat freeze-thaw cycles.

TARGET INFORMATION

Gene ID	3756
Gene Symbol	KCNH1
UniProt ID	KCNH1_HUMAN
Immunogen Region	720-769 aa
Specificity	KCNH1 Polyclonal Antibody detects endogenous levels of KCNH1 protein.

ADDITIONAL INFORMATION

Note STRICTLY FOR FURTHER SCIENTIFIC RESEARCH USE ONLY (RUO). MUST NOT TO BE USED IN DIAGNOSTIC OR THERAPEUTIC APPLICATIONS.



Western blot analysis of KCNH1 Antibody. The lane on the right is blocked with the KCNH1 peptide.

Western blot analysis of the lysates from COLO205 cells using KCNH1 antibody.

Western blot analysis of various cells using KCNH1 Polyclonal Antibody diluted at 1: 2000