

Anti-MAPK10 antibody (361-410 aa) (STJ93808)

GENERAL INFORMATION

Product Type	Primary antibodies
Applications	WB/IHC/IF/ELISA
Host / Source	Rabbit
Reactivity	Human/Mouse/Rat

PRODUCT PROPERTIES

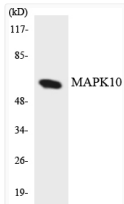
Clonality	Polyclonal
Concentration	1 mg/mL
Conjugation	Unconjugated
Purification	The antibody was affinity-purified from rabbit antiserum by affinity-chromatography using epitope-specific immunogen.
Dilution Range	WB 1:500-1:2000 IHC 1:100-1:300 IF 1:200-1:1000 ELISA 1:20000
Formulation	Liquid in PBS containing 50% Glycerol, 0.5% BSA and 0.02% Sodium Azide.
Isotype	IgG
Molecular Weight	Observed: 48kD
Storage Instruction	Store at -20°C for up to 1 year from the date of receipt, and avoid repeat freeze-thaw cycles.

TARGET INFORMATION

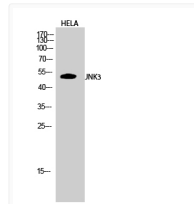
Gene ID	5602
Gene Symbol	MAPK10
UniProt ID	MK10_HUMAN
Immunogen Region	361-410 aa
Specificity	JNK3 Polyclonal Antibody detects endogenous levels of JNK3 protein.

ADDITIONAL INFORMATION

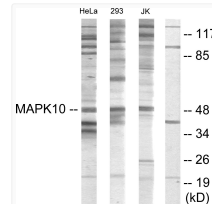
Note STRICTLY FOR FURTHER SCIENTIFIC RESEARCH USE ONLY (RUO). MUST NOT TO BE USED IN DIAGNOSTIC OR THERAPEUTIC APPLICATIONS.



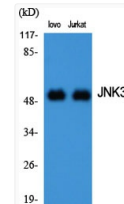
Western blot analysis of the lysates from HUVEC cells using MAPK10 antibody.



Western blot analysis of HELA cells using JNK3 Polyclonal Antibody diluted at 1 : 2000



Western blot analysis of lysates from HeLa, 293, and Jurkat cells, using MAPK10 Antibody. The lane on the right is blocked with the synthesized peptide.



Western blot analysis of various cells using JNK3 Polyclonal Antibody diluted at 1 : 2000