

Anti-ISL2 antibody (161-210 aa) (STJ93780)

GENERAL INFORMATION

Product Type	Primary antibodies
Applications	WB/IHC
Host / Source	Rabbit
Reactivity	Human/Mouse/Rat

PRODUCT PROPERTIES

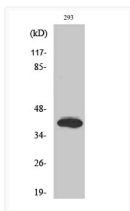
Clonality	Polyclonal
Concentration	1 mg/mL
Conjugation	Unconjugated
Purification	The antibody was affinity-purified from rabbit antiserum by affinity-chromatography using epitope-specific immunogen.
Dilution Range	WB 1:500-2000 IHC-P 1:50-300
Formulation	Liquid in PBS containing 50% Glycerol, 0.5% BSA and 0.02% Sodium Azide.
Isotype	IgG
Molecular Weight	Observed: 40kD
Storage Instruction	Store at -20°C for up to 1 year from the date of receipt, and avoid repeat freeze-thaw cycles.

TARGET INFORMATION

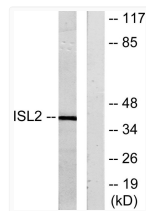
Gene ID	64843
Gene Symbol	ISL2
UniProt ID	ISL2_HUMAN
Immunogen Region	161-210 aa
Specificity	Islet-2 Polyclonal Antibody detects endogenous levels of Islet-2 protein.

ADDITIONAL INFORMATION

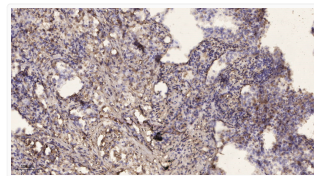
Note **STRICTLY FOR FURTHER SCIENTIFIC RESEARCH USE ONLY (RUO). MUST NOT TO BE USED IN DIAGNOSTIC OR THERAPEUTIC APPLICATIONS.**



Western blot analysis of various cells using Islet-2 polyclonal antibody diluted at 1:500. Cell nucleus extracted by STJ93780



Western blot analysis of lysates from 293 cells, using ISL2 Antibody. The lane on the right was blocked with the STJ93780



Immunohistochemical analysis of paraffin-embedded human lung cancer. 1, Antibody was diluted at 1:200 (4° overnight), STJ93780