

Anti-IQGAP1 antibody (247-296 aa) (STJ93752)

GENERAL INFORMATION

Product Type	Primary antibodies
Applications	WB/IHC
Host / Source	Rabbit
Reactivity	Human/Mouse

PRODUCT PROPERTIES

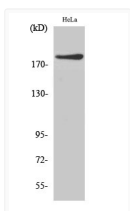
Clonality	Polyclonal
Concentration	1 mg/mL
Conjugation	Unconjugated
Purification	The antibody was affinity-purified from rabbit antiserum by affinity-chromatography using epitope-specific immunogen.
Dilution Range	WB 1:500-2000 IHC-P 1:50-300
Formulation	Liquid in PBS containing 50% Glycerol, 0.5% BSA and 0.02% Sodium Azide.
Isotype	IgG
Molecular Weight	Observed: 190kD
Storage Instruction	Store at -20°C for up to 1 year from the date of receipt, and avoid repeat freeze-thaw cycles.

TARGET INFORMATION

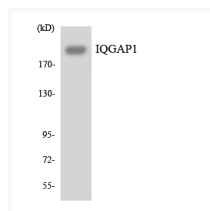
Gene ID	8826
Gene Symbol	IQGAP1
UniProt ID	IQGA1_HUMAN
Immunogen Region	247-296 aa
Specificity	IQGAP1 Polyclonal Antibody detects endogenous levels of IQGAP1 protein.

ADDITIONAL INFORMATION

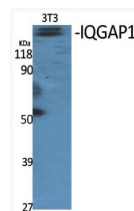
Note STRICTLY FOR FURTHER SCIENTIFIC RESEARCH USE ONLY (RUO). MUST NOT TO BE USED IN DIAGNOSTIC OR THERAPEUTIC APPLICATIONS.



Western blot analysis of HeLa cells using IQGAP1 Polyclonal Antibody diluted at 1: 1000



Western blot analysis of the lysates from K562 cells using IQGAP1 antibody.



Western blot analysis of various cells using IQGAP1 Polyclonal Antibody diluted at 1: 1000