

Anti-ITPKA antibody (396-445 aa) (STJ93745)

GENERAL INFORMATION

Product Type	Primary antibodies
Applications	WB/ELISA/IHC
Host / Source	Rabbit
Reactivity	Human/Mouse/Rat

PRODUCT PROPERTIES

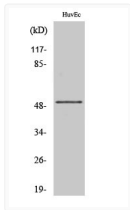
Clonality	Polyclonal
Concentration	1 mg/mL
Conjugation	Unconjugated
Purification	The antibody was affinity-purified from rabbit antiserum by affinity-chromatography using epitope-specific immunogen.
Dilution Range	WB 1:500-2000 IHC-P 1:50-300 ELISA 2000-20000
Formulation	Liquid in PBS containing 50% Glycerol, 0.5% BSA and 0.02% Sodium Azide.
Isotype	IgG
Molecular Weight	Observed: 52kD
Storage Instruction	Store at -20°C for up to 1 year from the date of receipt, and avoid repeat freeze-thaw cycles.

TARGET INFORMATION

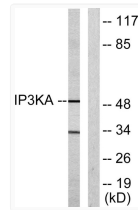
Gene ID	3706
Gene Symbol	ITPKA
UniProt ID	IP3KA_HUMAN
Immunogen Region	396-445 aa
Specificity	IP3KA Polyclonal Antibody detects endogenous levels of IP3KA protein.

ADDITIONAL INFORMATION

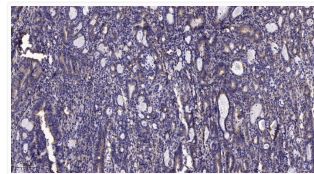
Note STRICTLY FOR FURTHER SCIENTIFIC RESEARCH USE ONLY (RUO). MUST NOT TO BE USED IN DIAGNOSTIC OR THERAPEUTIC APPLICATIONS.



Western Blot analysis of various cells using IP3KA Polyclonal Antibody STJ93745



Western blot analysis of lysates from HUVEC cells, using IP3KA Antibody. The lane on the right was blocked with the STJ93745



Immunohistochemical analysis of paraffin-embedded human gastric adenocarcinoma. 1. Antibody was diluted at 1:200 (4° STJ93745