

## Anti-ITGB3 antibody (739-788 aa) (STJ93735)

### GENERAL INFORMATION

Product Type	Primary antibodies
Applications	WB/IHC/IF/ELISA
Host / Source	Rabbit
Reactivity	Human/Mouse/Rat

### PRODUCT PROPERTIES

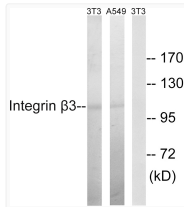
Clonality	Polyclonal
Concentration	1 mg/mL
Conjugation	Unconjugated
Purification	The antibody was affinity-purified from rabbit antiserum by affinity-chromatography using epitope-specific immunogen.
Dilution Range	WB 1:500-1:2000 IHC-P 1:100-300 ELISA 1:20000 IF 1:100-300
Formulation	Liquid in PBS containing 50% Glycerol, 0.5% BSA and 0.02% Sodium Azide.
Isotype	IgG
Molecular Weight	Observed: 110kD
Storage Instruction	Store at -20°C for up to 1 year from the date of receipt, and avoid repeat freeze-thaw cycles.

### TARGET INFORMATION

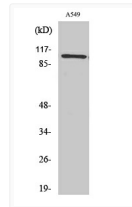
Gene ID	<a href="#">3690</a>
Gene Symbol	<a href="#">ITGB3</a>
UniProt ID	<a href="#">ITB3_HUMAN</a>
Immunogen Region	739-788 aa
Specificity	Integrin Beta 3 Polyclonal Antibody detects endogenous levels of Integrin Beta 3 protein.

### ADDITIONAL INFORMATION

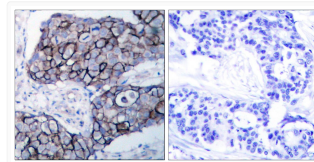
Note **STRICTLY FOR FURTHER SCIENTIFIC RESEARCH USE ONLY (RUO). MUST NOT TO BE USED IN DIAGNOSTIC OR THERAPEUTIC APPLICATIONS.**



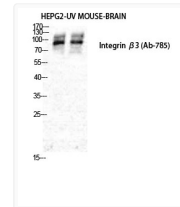
Western blot analysis of lysates from NIH/3T3 and A549 cells, using Integrin beta3 Antibody. The lane on the right is blocked with the synthesized peptide.



Western blot analysis of NIH-3T3 cells using Integrin Beta 3 Polyclonal Antibody diluted at 1:500



Immunohistochemistry analysis of paraffin-embedded human breast carcinoma tissue, using Integrin beta3 Antibody. The picture on the right is blocked with the synthesized peptide.



Western blot analysis of various cells using Integrin Beta 3 Polyclonal Antibody diluted at 1:500