

Anti-INSR antibody (1326-1375 aa) (STJ93725)

GENERAL INFORMATION

Product Type	Primary antibodies
Applications	IHC/IF/WB/ELISA
Host / Source	Rabbit
Reactivity	Human/Rat/Mouse/Pig

PRODUCT PROPERTIES

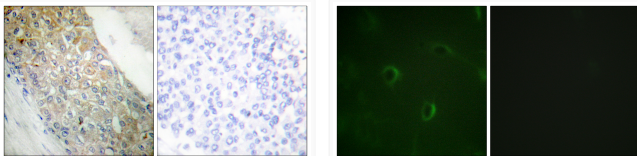
Clonality	Polyclonal
Concentration	1 mg/mL
Conjugation	Unconjugated
Purification	The antibody was affinity-purified from rabbit antiserum by affinity-chromatography using epitope-specific immunogen.
Dilution Range	WB 1:500-2000 IHC 1:100-1:300 IF 1:200-1:1000 ELISA 1:5000
Formulation	Liquid in PBS containing 50% Glycerol, 0.5% BSA and 0.02% Sodium Azide.
Isotype	IgG
Molecular Weight	Observed: 155kD
Storage Instruction	Store at -20°C for up to 1 year from the date of receipt, and avoid repeat freeze-thaw cycles.

TARGET INFORMATION

Gene ID	3643
Gene Symbol	INSR
UniProt ID	INSR_HUMAN
Immunogen Region	1326-1375 aa
Specificity	Insulin R Polyclonal Antibody detects endogenous levels of Insulin R protein.

ADDITIONAL INFORMATION

Note **STRICTLY FOR FURTHER SCIENTIFIC RESEARCH USE ONLY (RUO). MUST NOT TO BE USED IN DIAGNOSTIC OR THERAPEUTIC APPLICATIONS.**



Immunohistochemistry analysis of paraffin-embedded human breast carcinoma tissue, using IR Antibody. The picture on the right is blocked with the synthesized peptide.

Immunofluorescence analysis of HUVEC cells, using IR Antibody. The picture on the right is blocked with the synthesized peptide.