

## Anti-IL15RA antibody (99-148 aa) (STJ93680)

### GENERAL INFORMATION

Product Type	Primary antibodies
Applications	WB/ELISA
Host / Source	Rabbit
Reactivity	Human/Rat

### PRODUCT PROPERTIES

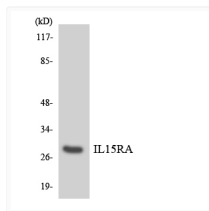
Clonality	Polyclonal
Concentration	1 mg/mL
Conjugation	Unconjugated
Purification	The antibody was affinity-purified from rabbit antiserum by affinity-chromatography using epitope-specific immunogen.
Dilution Range	WB 1:500-1:2000 ELISA 1:40000
Formulation	Liquid in PBS containing 50% Glycerol, 0.5% BSA and 0.02% Sodium Azide.
Isotype	IgG
Molecular Weight	Observed: 32kD
Storage Instruction	Store at -20°C for up to 1 year from the date of receipt, and avoid repeat freeze-thaw cycles.

### TARGET INFORMATION

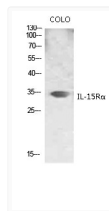
Gene ID	<a href="#">3601</a>
Gene Symbol	<a href="#">IL15RA</a>
UniProt ID	<a href="#">I15RA_HUMAN</a>
Immunogen Region	99-148 aa
Specificity	IL-15R Alpha Polyclonal Antibody detects endogenous levels of IL-15R Alpha protein.

### ADDITIONAL INFORMATION

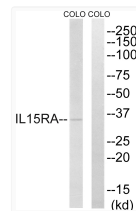
Note **STRICTLY FOR FURTHER SCIENTIFIC RESEARCH USE ONLY (RUO). MUST NOT TO BE USED IN DIAGNOSTIC OR THERAPEUTIC APPLICATIONS.**



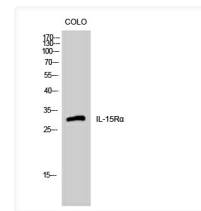
Western blot analysis of the lysates from HeLa cells using IL15RA antibody.



Western blot analysis of various lysis using IL-15R Alpha Polyclonal Antibody. Secondary antibody was diluted at 1:20000



Western blot analysis of lysates from COLO cells, using IL15RA Antibody. The lane on the right is blocked with the synthesized peptide.



Western blot analysis of COLO cells using IL-15R Alpha Polyclonal Antibody