

## Anti-IFNG antibody (20-69 aa) (STJ93644)

### GENERAL INFORMATION

Product Type	Primary antibodies
Applications	WB/IHC/IF/ELISA
Host / Source	Rabbit
Reactivity	Human/Rat/Mouse

### PRODUCT PROPERTIES

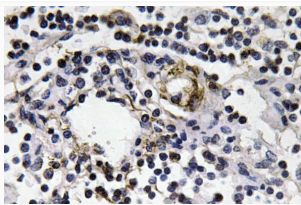
Clonality	Polyclonal
Concentration	1 mg/mL
Conjugation	Unconjugated
Purification	The antibody was affinity-purified from rabbit antiserum by affinity-chromatography using epitope-specific immunogen.
Dilution Range	WB 1:500-1:2000 IHC 1:100-1:300 ELISA 1:40000 IF 1:50-200
Formulation	Liquid in PBS containing 50% Glycerol, 0.5% BSA and 0.02% Sodium Azide.
Isotype	IgG
Molecular Weight	Observed: 17kD
Storage Instruction	Store at -20°C for up to 1 year from the date of receipt, and avoid repeat freeze-thaw cycles.

### TARGET INFORMATION

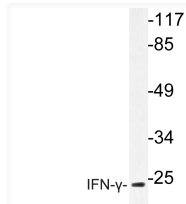
Gene ID	<a href="#">3458</a>
Gene Symbol	<a href="#">IFNG</a>
UniProt ID	<a href="#">IFNG_HUMAN</a>
Immunogen Region	20-69 aa
Specificity	IFN-Gamma Polyclonal Antibody detects endogenous levels of IFN-Gamma protein.

### ADDITIONAL INFORMATION

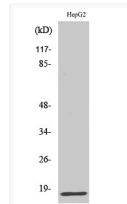
Note: STRICTLY FOR FURTHER SCIENTIFIC RESEARCH USE ONLY (RUO). MUST NOT TO BE USED IN DIAGNOSTIC OR THERAPEUTIC APPLICATIONS.



Immunohistochemistry analysis of IFN-Gamma antibody in paraffin-embedded human lymph node tissue.



Western blot analysis of lysate from HepG2 cells, using IFN-Gamma antibody.



Western blot analysis of various cells using IFN-Gamma Polyclonal Antibody diluted at 1:1000