

## Anti-ICAM1 antibody (479-528 aa) (STJ93634)

### GENERAL INFORMATION

Product Type	Primary antibodies
Applications	WB/IHC/IF/ELISA
Host / Source	Rabbit
Reactivity	Human/Rat/Mouse

### PRODUCT PROPERTIES

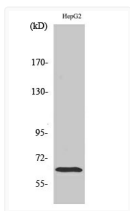
Clonality	Polyclonal
Concentration	1 mg/mL
Conjugation	Unconjugated
Purification	The antibody was affinity-purified from rabbit antiserum by affinity-chromatography using epitope-specific immunogen.
Dilution Range	WB 1:500-1:2000 ELISA 1:10000 IF 1:50-200
Formulation	Liquid in PBS containing 50% Glycerol, 0.5% BSA and 0.02% Sodium Azide.
Isotype	IgG
Molecular Weight	Observed: 58kD
Storage Instruction	Store at -20°C for up to 1 year from the date of receipt, and avoid repeat freeze-thaw cycles.

### TARGET INFORMATION

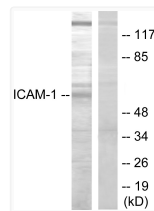
Gene ID	<a href="#">3383</a>
Gene Symbol	<a href="#">ICAM1</a>
UniProt ID	<a href="#">ICAM1_HUMAN</a>
Immunogen Region	479-528 aa
Specificity	ICAM-1 Polyclonal Antibody detects endogenous levels of ICAM-1 protein.

### ADDITIONAL INFORMATION

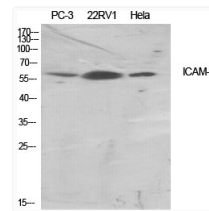
Note **STRICTLY FOR FURTHER SCIENTIFIC RESEARCH USE ONLY (RUO). MUST NOT TO BE USED IN DIAGNOSTIC OR THERAPEUTIC APPLICATIONS.**



Western blot analysis of HepG2 cells using ICAM-1 Polyclonal Antibody diluted at 1: 500



Western blot analysis of lysates from HepG2 cells, using ICAM-1 Antibody. The lane on the right is blocked with the synthesized peptide.



Western blot analysis of various cells using ICAM-1 Polyclonal Antibody diluted at 1: 500