

## Anti-HSPE1 antibody (51-100 aa) (STJ93613)

### GENERAL INFORMATION

Product Type	Primary antibodies
Applications	WB/IHC/IF/ELISA
Host / Source	Rabbit
Reactivity	Human/Mouse/Rat

### PRODUCT PROPERTIES

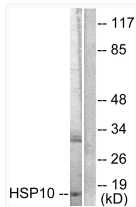
Clonality	Polyclonal
Concentration	1 mg/mL
Conjugation	Unconjugated
Purification	The antibody was affinity-purified from rabbit antiserum by affinity-chromatography using epitope-specific immunogen.
Dilution Range	WB 1:500-1:2000 IHC 1:100-1:300 IF 1:200-1:1000 ELISA 1:10000
Formulation	Liquid in PBS containing 50% Glycerol, 0.5% BSA and 0.02% Sodium Azide.
Isotype	IgG
Molecular Weight	Observed: 10kD
Storage Instruction	Store at -20°C for up to 1 year from the date of receipt, and avoid repeat freeze-thaw cycles.

### TARGET INFORMATION

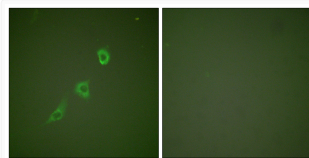
Gene ID	<a href="#">3336</a>
Gene Symbol	<a href="#">HSPE1</a>
UniProt ID	<a href="#">CH10_HUMAN</a>
Immunogen Region	51-100 aa
Specificity	HSP10 Polyclonal Antibody detects endogenous levels of HSP10 protein.

### ADDITIONAL INFORMATION

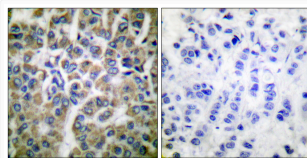
Note STRICTLY FOR FURTHER SCIENTIFIC RESEARCH USE ONLY (RUO). MUST NOT TO BE USED IN DIAGNOSTIC OR THERAPEUTIC APPLICATIONS.



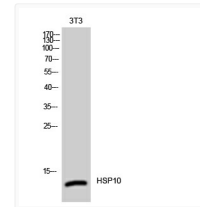
Western blot analysis of lysates from NIH/3T3 cells, using HSP10 Antibody. The lane on the right is blocked with the synthesized peptide.



Immunofluorescence analysis of NIH/3T3 cells, using HSP10 Antibody. The picture on the right is blocked with the synthesized peptide.



Immunohistochemistry analysis of paraffin-embedded human breast carcinoma tissue, using HSP10 Antibody. The picture on the right is blocked with the synthesized peptide.



Western blot analysis of 3T3 cells using HSP10 Polyclonal Antibody