

Anti-HSP A9 antibody (630-679 aa) (STJ93611)

GENERAL INFORMATION

Product Type	Primary antibodies
Applications	WB/IHC/IF/ELISA
Host / Source	Rabbit
Reactivity	Human/Mouse/Rat/Monkey

PRODUCT PROPERTIES

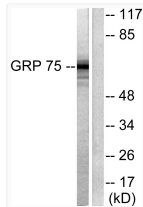
Clonality	Polyclonal
Concentration	1 mg/mL
Conjugation	Unconjugated
Purification	The antibody was affinity-purified from rabbit antiserum by affinity-chromatography using epitope-specific immunogen.
Dilution Range	WB 1:500-1:2000 IHC 1:100-1:300 IF 1:200-1:1000 ELISA 1:40000
Formulation	Liquid in PBS containing 50% Glycerol, 0.5% BSA and 0.02% Sodium Azide.
Isotype	IgG
Molecular Weight	Observed: 75kD
Storage Instruction	Store at -20°C for up to 1 year from the date of receipt, and avoid repeat freeze-thaw cycles.

TARGET INFORMATION

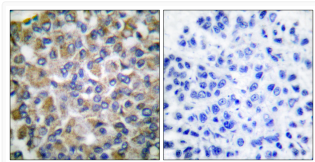
Gene ID	3313
Gene Symbol	HSPA9
UniProt ID	HSPA9_HUMAN
Immunogen Region	630-679 aa
Specificity	HSP A9 Polyclonal Antibody detects endogenous levels of HSP A9 protein.

ADDITIONAL INFORMATION

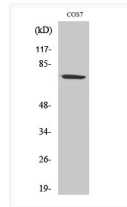
Note STRICTLY FOR FURTHER SCIENTIFIC RESEARCH USE ONLY (RUO). MUST NOT TO BE USED IN DIAGNOSTIC OR THERAPEUTIC APPLICATIONS.



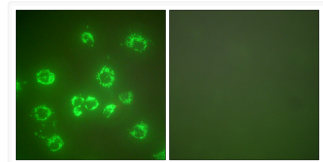
Western blot analysis of lysates from COS7 cells, using GRP75 Antibody. The lane on the right is blocked with the synthesized peptide.



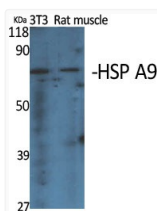
Immunohistochemistry analysis of paraffin-embedded human breast carcinoma tissue, using GRP75 Antibody. The picture on the right is blocked with the synthesized peptide.



Western blot analysis of COS7 cells using HSP A9 Polyclonal Antibody diluted at 1: 2000



Immunofluorescence analysis of COS7 cells, using GRP75 Antibody. The picture on the right is blocked with the synthesized peptide.



Western blot analysis of various cells using HSP A9 Polyclonal Antibody diluted at 1: 2000