

Anti-EIF2AK1 antibody (571-620 aa) (STJ93592)

GENERAL INFORMATION

Product Type	Primary antibodies
Applications	WB/IHC/IF/ELISA
Host / Source	Rabbit
Reactivity	Human/Mouse/Monkey

PRODUCT PROPERTIES

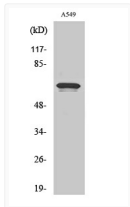
Clonality	Polyclonal
Concentration	1 mg/mL
Conjugation	Unconjugated
Purification	The antibody was affinity-purified from rabbit antiserum by affinity-chromatography using epitope-specific immunogen.
Dilution Range	WB 1:500-1:2000 IHC-P 1:100-300 ELISA 1:20000 IF 1:100-300
Formulation	Liquid in PBS containing 50% Glycerol, 0.5% BSA and 0.02% Sodium Azide.
Isotype	IgG
Molecular Weight	Observed: 71kD
Storage Instruction	Store at -20°C for up to 1 year from the date of receipt, and avoid repeat freeze-thaw cycles.

TARGET INFORMATION

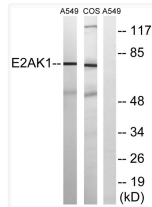
Gene ID	27102
Gene Symbol	EIF2AK1
UniProt ID	E2AK1_HUMAN
Immunogen Region	571-620 aa
Specificity	HRI Polyclonal Antibody detects endogenous levels of HRI protein.

ADDITIONAL INFORMATION

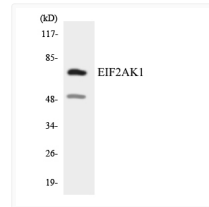
Note STRICTLY FOR FURTHER SCIENTIFIC RESEARCH USE ONLY (RUO). MUST NOT TO BE USED IN DIAGNOSTIC OR THERAPEUTIC APPLICATIONS.



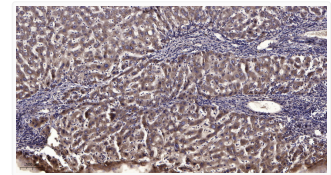
Western blot analysis of various cells using HRI Polyclonal Antibody STJ93592



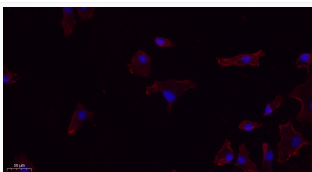
Western blot analysis of lysates from A549 and COS7 cells, using EIF2AK1 Antibody. The lane on the right was blocked STJ93592



Western blot analysis of the lysates from COLO205 cells using EIF2AK1 antibody. STJ93592



Immunohistochemical analysis of paraffin-embedded human liver cancer. 1, Antibody was diluted at 1:200 (4° overnight). STJ93592



Immunofluorescence analysis of A549. 1, primary antibody (red) was diluted at 1:200 (4°C overnight). 2, Goat Anti Rabbit STJ93592