

## Anti-HNRNPCL1 antibody (31-80 aa) (STJ93561)

### GENERAL INFORMATION

Product Type	Primary antibodies
Applications	WB/ELISA
Host / Source	Rabbit
Reactivity	Human/Rat/Mouse

### PRODUCT PROPERTIES

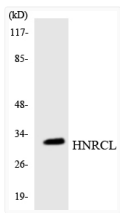
Clonality	Polyclonal
Concentration	1 mg/mL
Conjugation	Unconjugated
Purification	The antibody was affinity-purified from rabbit antiserum by affinity-chromatography using epitope-specific immunogen.
Dilution Range	WB 1:500-1:2000 ELISA 1:20000
Formulation	Liquid in PBS containing 50% Glycerol, 0.5% BSA and 0.02% Sodium Azide.
Isotype	IgG
Molecular Weight	Observed: 32kD
Storage Instruction	Store at -20°C for up to 1 year from the date of receipt, and avoid repeat freeze-thaw cycles.

### TARGET INFORMATION

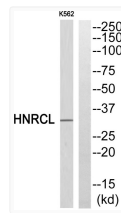
Gene ID	<a href="#">343069</a>
Gene Symbol	<a href="#">HNRNPCL1</a>
UniProt ID	<a href="#">HNRC1_HUMAN</a>
Immunogen Region	31-80 aa
Specificity	hnRNP CL1 Polyclonal Antibody detects endogenous levels of hnRNP CL1 protein.

### ADDITIONAL INFORMATION

Note STRICTLY FOR FURTHER SCIENTIFIC RESEARCH USE ONLY (RUO). MUST NOT TO BE USED IN DIAGNOSTIC OR THERAPEUTIC APPLICATIONS.



Western blot analysis of the lysates from RAW264.7 cells using HNRCL antibody.



Western blot analysis of HNRCL Antibody. The lane on the right is blocked with the HNRCL peptide.