

Anti-HNRNPA1 antibody (51-100 aa) (STJ93557)

GENERAL INFORMATION

Product Type	Primary antibodies
Applications	WB/IHC/IF/ELISA
Host / Source	Rabbit
Reactivity	Human/Mouse/Rat

PRODUCT PROPERTIES

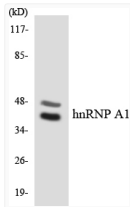
Clonality	Polyclonal
Concentration	1 mg/mL
Conjugation	Unconjugated
Purification	The antibody was affinity-purified from rabbit antiserum by affinity-chromatography using epitope-specific immunogen.
Dilution Range	WB 1:500-1:2000 IHC 1:100-1:300 IF 1:200-1:1000 ELISA 1:20000
Formulation	Liquid in PBS containing 50% Glycerol, 0.5% BSA and 0.02% Sodium Azide.
Isotype	IgG
Molecular Weight	Observed: 33kD
Storage Instruction	Store at -20°C for up to 1 year from the date of receipt, and avoid repeat freeze-thaw cycles.

TARGET INFORMATION

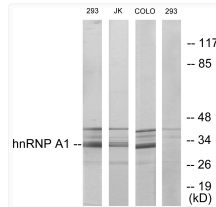
Gene ID	3178
Gene Symbol	HNRNPA1
UniProt ID	ROA1_HUMAN
Immunogen Region	51-100 aa
Specificity	hnRNP A1 Polyclonal Antibody detects endogenous levels of hnRNP A1 protein.

ADDITIONAL INFORMATION

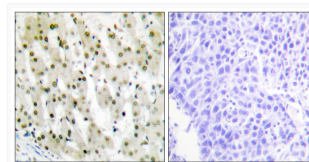
Note STRICTLY FOR FURTHER SCIENTIFIC RESEARCH USE ONLY (RUO). MUST NOT TO BE USED IN DIAGNOSTIC OR THERAPEUTIC APPLICATIONS.



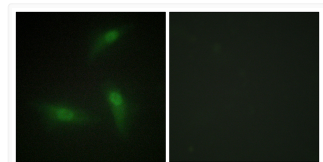
Western blot analysis of the lysates from RAW264.7 cells using hnRNP A1 antibody.



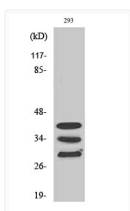
Western blot analysis of lysates from 293, Jurkat, and COLO205 cells, using hnRNP A1 Antibody. The lane on the right is blocked with the synthesized peptide.



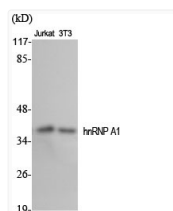
Immunohistochemistry analysis of paraffin-embedded human liver carcinoma tissue, using hnRNP A1 Antibody. The picture on the right is blocked with the synthesized peptide.



Immunofluorescence analysis of HeLa cells, using hnRNP A1 Antibody. The picture on the right is blocked with the synthesized peptide.



Western blot analysis of COLO205 cells using hnRNP A1 Polyclonal Antibody diluted at 1: 2000



Western blot analysis of various cells using hnRNP A1 Polyclonal Antibody diluted at 1: 2000