

Anti-HDAC6 antibody (1166-1215 aa) (STJ93512)

GENERAL INFORMATION

Product Type	Primary antibodies
Applications	WB/IHC/IF/ELISA
Host / Source	Rabbit
Reactivity	Human/Mouse

PRODUCT PROPERTIES

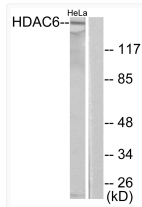
Clonality	Polyclonal
Concentration	1 mg/mL
Conjugation	Unconjugated
Purification	The antibody was affinity-purified from rabbit antiserum by affinity-chromatography using epitope-specific immunogen.
Dilution Range	WB 1:500-1:2000 IHC 1:100-1:300 IF 1:200-1:1000 ELISA 1:20000
Formulation	Liquid in PBS containing 50% Glycerol, 0.5% BSA and 0.02% Sodium Azide.
Isotype	IgG
Molecular Weight	Observed: 135kD
Storage Instruction	Store at -20°C for up to 1 year from the date of receipt, and avoid repeat freeze-thaw cycles.

TARGET INFORMATION

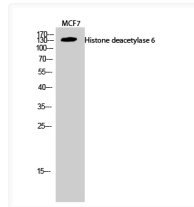
Gene ID	10013
Gene Symbol	HDAC6
UniProt ID	HDAC6_HUMAN
Immunogen Region	1166-1215 aa
Specificity	Histone deacetylase 6 Polyclonal Antibody detects endogenous levels of Histone deacetylase 6 protein.

ADDITIONAL INFORMATION

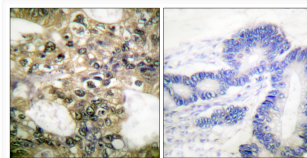
Note STRICTLY FOR FURTHER SCIENTIFIC RESEARCH USE ONLY (RUO). MUST NOT TO BE USED IN DIAGNOSTIC OR THERAPEUTIC APPLICATIONS.



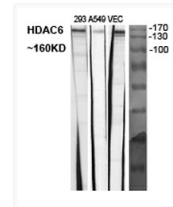
Western blot analysis of lysates from HeLa cells, using HDAC6 Antibody. The lane on the right is blocked with the synthesized peptide.



Western blot analysis of MCF7 cells using Histone deacetylase 6 Polyclonal Antibody diluted at 1:2000



Immunohistochemistry analysis of paraffin-embedded human colon carcinoma tissue, using HDAC6 Antibody. The picture on the right is blocked with the synthesized peptide.



Western blot analysis of various cells using Histone deacetylase 6 Polyclonal Antibody diluted at 1:2000