

Anti-TGFB11 antibody (31-80 aa) (STJ93497)

GENERAL INFORMATION

| | |
|---------------|--------------------|
| Product Type | Primary antibodies |
| Applications | WB/IHC/IF/ELISA |
| Host / Source | Rabbit |
| Reactivity | Human/Mouse/Rat |

PRODUCT PROPERTIES

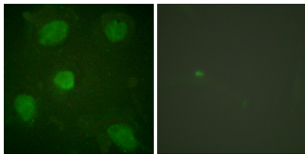
| | |
|---------------------|-----------------------------------------------------------------------------------------------------------------------|
| Clonality | Polyclonal |
| Concentration | 1 mg/mL |
| Conjugation | Unconjugated |
| Purification | The antibody was affinity-purified from rabbit antiserum by affinity-chromatography using epitope-specific immunogen. |
| Dilution Range | WB 1:500-2000 IHC 1:100-1:300 IF 1:200-1:1000 ELISA 1:10000 |
| Formulation | Liquid in PBS containing 50% Glycerol, 0.5% BSA and 0.02% Sodium Azide. |
| Isotype | IgG |
| Molecular Weight | Calculated: 50kD |
| Storage Instruction | Store at -20°C for up to 1 year from the date of receipt, and avoid repeat freeze-thaw cycles. |

TARGET INFORMATION

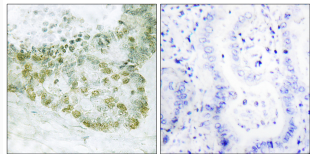
| | |
|------------------|-----------------------------------------------------------------------|
| Gene ID | 7041 |
| Gene Symbol | TGFB11 |
| UniProt ID | TGFI1_HUMAN |
| Immunogen Region | 31-80 aa |
| Specificity | Hic-5 Polyclonal Antibody detects endogenous levels of Hic-5 protein. |

ADDITIONAL INFORMATION

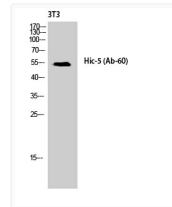
Note **STRICTLY FOR FURTHER SCIENTIFIC RESEARCH USE ONLY (RUO). MUST NOT TO BE USED IN DIAGNOSTIC OR THERAPEUTIC APPLICATIONS.**



Immunofluorescence analysis of HeLa cells, using Hic-5 Antibody. The picture on the right is blocked with the synthesized peptide.



Immunohistochemistry analysis of paraffin-embedded human lung carcinoma tissue, using Hic-5 Antibody. The picture on the right is blocked with the synthesized peptide.



Western blot analysis of NIH-3T3 cells using Hic-5 Polyclonal Antibody diluted at 1: 1000