

Anti-NDC80 antibody (351-400 aa) (STJ93486)

GENERAL INFORMATION

Product Type	Primary antibodies
Applications	WB/IF/ELISA
Host / Source	Rabbit
Reactivity	Human/Mouse

PRODUCT PROPERTIES

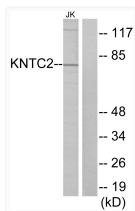
Clonality	Polyclonal
Concentration	1 mg/mL
Conjugation	Unconjugated
Purification	The antibody was affinity-purified from rabbit antiserum by affinity-chromatography using epitope-specific immunogen.
Dilution Range	WB 1:500-1:2000 IF 1:200-1:1000 ELISA 1:20000
Formulation	Liquid in PBS containing 50% Glycerol, 0.5% BSA and 0.02% Sodium Azide.
Isotype	IgG
Molecular Weight	Observed: 73kD
Storage Instruction	Store at -20°C for up to 1 year from the date of receipt, and avoid repeat freeze-thaw cycles.

TARGET INFORMATION

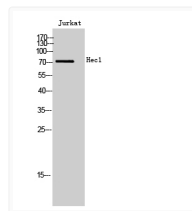
Gene ID	10403
Gene Symbol	NDC80
UniProt ID	NDC80_HUMAN
Immunogen Region	351-400 aa
Specificity	Hec1 Polyclonal Antibody detects endogenous levels of Hec1 protein.

ADDITIONAL INFORMATION

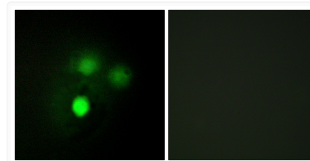
Note **STRICTLY FOR FURTHER SCIENTIFIC RESEARCH USE ONLY (RUO). MUST NOT TO BE USED IN DIAGNOSTIC OR THERAPEUTIC APPLICATIONS.**



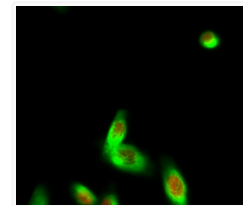
Western blot analysis of lysates from Jurkat cells, using KNTC2 Antibody. The lane on the right is blocked with the synthesized peptide.



Western blot analysis of Jurkat cells using Hec1 Polyclonal Antibody cells nucleus extracted by Minute TM Cytoplasmic and Nuclear Fractionation kit (SC-003, Inventibiotech, MN, USA).



Immunofluorescence analysis of HUVEC cells, using KNTC2 Antibody. The picture on the right is blocked with the synthesized peptide.



Immunofluorescence analysis of HeLa cell. 1, Hec1 Polyclonal Antibody (red) was diluted at 1:200 (4°C overnight). Kif 7 monoclonal antibody (3F8) (green) was diluted at 1:200 (4°C overnight). 2, Goat Anti Rabbit Alexa Fluor 594 Catalog: (NA was diluted at 1:1000 (room temperature, 50min). Goat Anti Mouse Alexa Fluor 488 Catalog: (NA was diluted at 1:1000 (room temperature, 50min).