

Anti-SERPIND1 antibody (41-90 aa) (STJ93474)

GENERAL INFORMATION

Product Type	Primary antibodies
Applications	WB/IHC/IF/ELISA
Host / Source	Rabbit
Reactivity	Human/Mouse/Rat

PRODUCT PROPERTIES

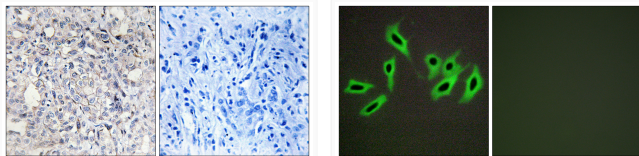
Clonality	Polyclonal
Concentration	1 mg/mL
Conjugation	Unconjugated
Purification	The antibody was affinity-purified from rabbit antiserum by affinity-chromatography using epitope-specific immunogen.
Dilution Range	WB 1:500-1:2000 IHC 1:100-1:300 IF 1:200-1:1000 ELISA 1:5000
Formulation	Liquid in PBS containing 50% Glycerol, 0.5% BSA and 0.02% Sodium Azide.
Isotype	IgG
Molecular Weight	Observed: 60kD
Storage Instruction	Store at -20°C for up to 1 year from the date of receipt, and avoid repeat freeze-thaw cycles.

TARGET INFORMATION

Gene ID	3053
Gene Symbol	SERPIND1
UniProt ID	HEP2_HUMAN
Immunogen Region	41-90 aa
Specificity	HC-II Polyclonal Antibody detects endogenous levels of HC-II protein.

ADDITIONAL INFORMATION

Note STRICTLY FOR FURTHER SCIENTIFIC RESEARCH USE ONLY (RUO). MUST NOT TO BE USED IN DIAGNOSTIC OR THERAPEUTIC APPLICATIONS.



Immunohistochemistry analysis of paraffin-embedded human liver carcinoma tissue, using Heparin Cofactor II Antibody. The picture on the right is blocked with the synthesized peptide.

Immunofluorescence analysis of HepG2 cells, using Heparin Cofactor II Antibody. The picture on the right is blocked with the synthesized peptide.