

## Anti-GSK3 Alpha/Beta antibody (246-295 aa) (STJ93446)

### GENERAL INFORMATION

Product Type	Primary antibodies
Applications	WB/IHC/IF/ELISA
Host / Source	Rabbit
Reactivity	Human/Mouse/Rat/D.melanogaster

### PRODUCT PROPERTIES

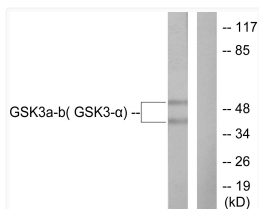
Clonality	Polyclonal
Concentration	1 mg/mL
Conjugation	Unconjugated
Purification	The antibody was affinity-purified from rabbit antiserum by affinity-chromatography using epitope-specific immunogen.
Dilution Range	WB 1:500-1:2000 IHC 1:100-1:300 ELISA 1:20000 IF 1:50-200
Formulation	Liquid in PBS containing 50% Glycerol, 0.5% BSA and 0.02% Sodium Azide.
Isotype	IgG
Molecular Weight	Observed: 51, 46kD
Storage Instruction	Store at -20°C for up to 1 year from the date of receipt, and avoid repeat freeze-thaw cycles.

### TARGET INFORMATION

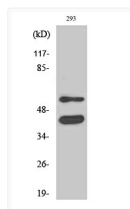
Gene ID	<a href="#">2932</a> <a href="#">2931</a>
Gene Symbol	<a href="#">GSK3B</a> <a href="#">GSK3A</a>
UniProt ID	<a href="#">GSK3B_HUMAN</a> <a href="#">GSK3A_HUMAN</a>
Immunogen Region	246-295 aa
Specificity	GSK3 Alpha/Beta Polyclonal Antibody detects endogenous levels of GSK3 Alpha/Beta protein.

### ADDITIONAL INFORMATION

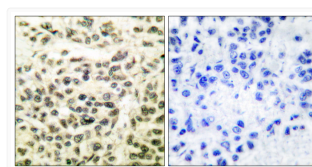
Note **STRICTLY FOR FURTHER SCIENTIFIC RESEARCH USE ONLY (RUO). MUST NOT TO BE USED IN DIAGNOSTIC OR THERAPEUTIC APPLICATIONS.**



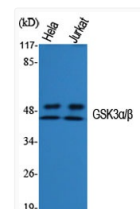
Western blot analysis of lysates from 293 cells, treated with TNF- $\alpha$  20ng/ml 30', using GSK3 alpha/beta Antibody. The lane on the right is blocked with the synthesized peptide.



Western blot analysis of 293 cells using GSK3 Alpha/Beta Polyclonal Antibody diluted at 1 : 1000



Immunohistochemistry analysis of paraffin-embedded human breast carcinoma tissue, using GSK3 alpha/beta Antibody. The picture on the right is blocked with the synthesized peptide.



Western blot analysis of various cells using GSK3 Alpha/Beta Polyclonal Antibody diluted at 1 : 1000