

Anti-GRB14 antibody (81-130 aa) (STJ93420)

GENERAL INFORMATION

Product Type	Primary antibodies
Applications	WB/IHC/IF/ELISA
Host / Source	Rabbit
Reactivity	Human/Mouse/Rat

PRODUCT PROPERTIES

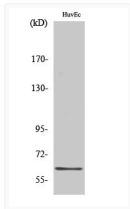
Clonality	Polyclonal
Concentration	1 mg/mL
Conjugation	Unconjugated
Purification	The antibody was affinity-purified from rabbit antiserum by affinity-chromatography using epitope-specific immunogen.
Dilution Range	WB 1:500-1:2000 IHC 1:100-1:300 ELISA 1:40000 IF 1:50-200
Formulation	Liquid in PBS containing 50% Glycerol, 0.5% BSA and 0.02% Sodium Azide.
Isotype	IgG
Molecular Weight	Observed: 61kD
Storage Instruction	Store at -20°C for up to 1 year from the date of receipt, and avoid repeat freeze-thaw cycles.

TARGET INFORMATION

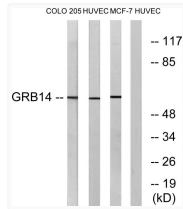
Gene ID	2888
Gene Symbol	GRB14
UniProt ID	GRB14_HUMAN
Immunogen Region	81-130 aa
Specificity	GRB14 Polyclonal Antibody detects endogenous levels of GRB14 protein.

ADDITIONAL INFORMATION

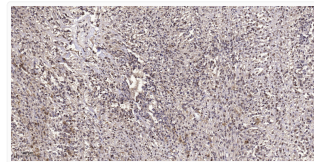
Note: STRICTLY FOR FURTHER SCIENTIFIC RESEARCH USE ONLY (RUO). MUST NOT TO BE USED IN DIAGNOSTIC OR THERAPEUTIC APPLICATIONS.



Western blot analysis of various cells using GRB14 Polyclonal Antibody STJ93420



Western blot analysis of lysates from HUVEC, COLO, and MCF-7 cells, using GRB14 Antibody. The lane on the right was STJ93420



Immunohistochemical analysis of paraffin-embedded human small intestinal carcinoma tissue. 1, Primary antibody was STJ93420