

Anti-GRB10 antibody (33-82 aa) (STJ93419)

GENERAL INFORMATION

Product Type	Primary antibodies
Applications	WB/IHC/IF/ELISA
Host / Source	Rabbit
Reactivity	Human/Rat/Mouse

PRODUCT PROPERTIES

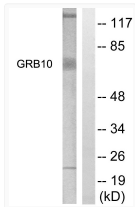
Clonality	Polyclonal
Concentration	1 mg/mL
Conjugation	Unconjugated
Purification	The antibody was affinity-purified from rabbit antiserum by affinity-chromatography using epitope-specific immunogen.
Dilution Range	WB 1:500-1:2000 IHC 1:100-1:300 IF 1:200-1:1000 ELISA 1:5000
Formulation	Liquid in PBS containing 50% Glycerol, 0.5% BSA and 0.02% Sodium Azide.
Isotype	IgG
Molecular Weight	Observed: 67kD
Storage Instruction	Store at -20°C for up to 1 year from the date of receipt, and avoid repeat freeze-thaw cycles.

TARGET INFORMATION

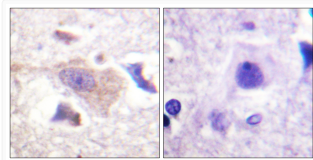
Gene ID	2887
Gene Symbol	GRB10
UniProt ID	GRB10_HUMAN
Immunogen Region	33-82 aa
Specificity	GRB10 Polyclonal Antibody detects endogenous levels of GRB10 protein.

ADDITIONAL INFORMATION

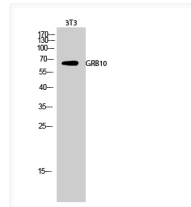
Note STRICTLY FOR FURTHER SCIENTIFIC RESEARCH USE ONLY (RUO). MUST NOT TO BE USED IN DIAGNOSTIC OR THERAPEUTIC APPLICATIONS.



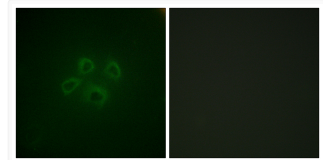
Western blot analysis of lysates from NIH/3T3 cells, treated with Insulin 0.01U/ml 15', using GRB10 Antibody. The lane on the right is blocked with the synthesized peptide.



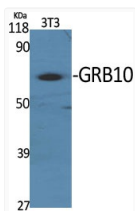
Immunohistochemistry analysis of paraffin-embedded human brain tissue, using GRB10 Antibody. The picture on the right is blocked with the synthesized peptide.



Western blot analysis of 3T3 cells using GRB10 Polyclonal Antibody diluted at 1: 2000.



Immunofluorescence analysis of HepG2 cells, using GRB10 Antibody. The picture on the right is blocked with the synthesized peptide.



Western blot analysis of various cells using GRB10 Polyclonal Antibody diluted at 1: 2000.