

## Anti-GZMH antibody (51-100 aa) (STJ93415)

### GENERAL INFORMATION

Product Type	Primary antibodies
Applications	WB/IHC/IF/ELISA
Host / Source	Rabbit
Reactivity	Human/Rat/Mouse

### PRODUCT PROPERTIES

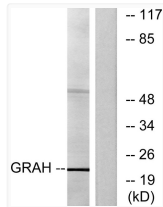
Clonality	Polyclonal
Concentration	1 mg/mL
Conjugation	Unconjugated
Purification	The antibody was affinity-purified from rabbit antiserum by affinity-chromatography using epitope-specific immunogen.
Dilution Range	WB 1:500-1:2000 IHC 1:100-1:300 IF 1:200-1:1000 ELISA 1:40000
Formulation	Liquid in PBS containing 50% Glycerol, 0.5% BSA and 0.02% Sodium Azide.
Isotype	IgG
Molecular Weight	Observed: 23kD
Storage Instruction	Store at -20°C for up to 1 year from the date of receipt, and avoid repeat freeze-thaw cycles.

### TARGET INFORMATION

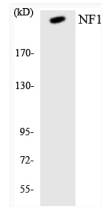
Gene ID	<a href="#">2999</a>
Gene Symbol	<a href="#">GZMH</a>
UniProt ID	<a href="#">GRAH_HUMAN</a>
Immunogen Region	51-100 aa
Specificity	Granzyme H Polyclonal Antibody detects endogenous levels of Granzyme H protein.

### ADDITIONAL INFORMATION

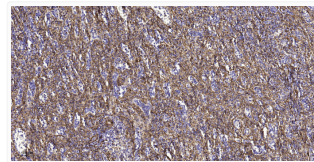
Note STRICTLY FOR FURTHER SCIENTIFIC RESEARCH USE ONLY (RUO). MUST NOT TO BE USED IN DIAGNOSTIC OR THERAPEUTIC APPLICATIONS.



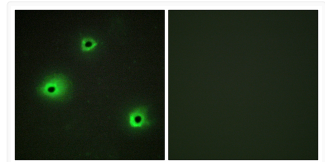
Western blot analysis of lysates from K562 cells, using GRAH Antibody. The lane on the right was blocked with the STJ93415



Western blot analysis of the lysates from HepG2 cells using NF1 antibody. STJ93415



Immunohistochemical analysis of paraffin-embedded human spleen tissue. 1, Primary antibody was diluted at 1:200 (4<sup>+</sup> STJ93415



Immunofluorescence analysis of A549 cells using GRAH Antibody. The picture on the right is blocked with the synthesized STJ93415