

Anti-GPR15 antibody (201-250 aa) (STJ93343)

GENERAL INFORMATION

Product Type	Primary antibodies
Applications	WB/IF/ELISA
Host / Source	Rabbit
Reactivity	Human/Mouse

PRODUCT PROPERTIES

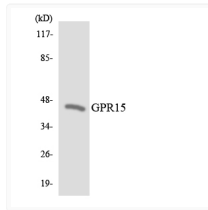
Clonality	Polyclonal
Concentration	1 mg/mL
Conjugation	Unconjugated
Purification	The antibody was affinity-purified from rabbit antiserum by affinity-chromatography using epitope-specific immunogen.
Dilution Range	WB 1:500-1:2000 IF 1:200-1:1000 ELISA 1:10000
Formulation	Liquid in PBS containing 50% Glycerol, 0.5% BSA and 0.02% Sodium Azide.
Isotype	IgG
Molecular Weight	Observed: 40kD
Storage Instruction	Store at -20°C for up to 1 year from the date of receipt, and avoid repeat freeze-thaw cycles.

TARGET INFORMATION

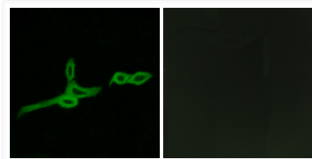
Gene ID	2838
Gene Symbol	GPR15
UniProt ID	GPR15_HUMAN
Immunogen Region	201-250 aa
Specificity	GPR15 Polyclonal Antibody detects endogenous levels of GPR15 protein.

ADDITIONAL INFORMATION

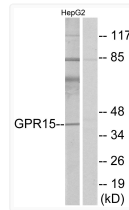
Note STRICTLY FOR FURTHER SCIENTIFIC RESEARCH USE ONLY (RUO). MUST NOT TO BE USED IN DIAGNOSTIC OR THERAPEUTIC APPLICATIONS.



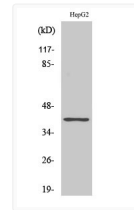
Western blot analysis of the lysates from HeLa cells using GPR15 antibody.



Immunofluorescence analysis of LOVO cells, using GPR15 Antibody. The picture on the right is blocked with the synthesized peptide.



Western blot analysis of lysates from HepG2 cells, using GPR15 Antibody. The lane on the right is blocked with the synthesized peptide.



Western blot analysis of various cells using GPR15 Polyclonal Antibody blocked with the synthesized peptide.